

PRINT
OUT
& KEEP

AMELIA TROUSERS PATTERN

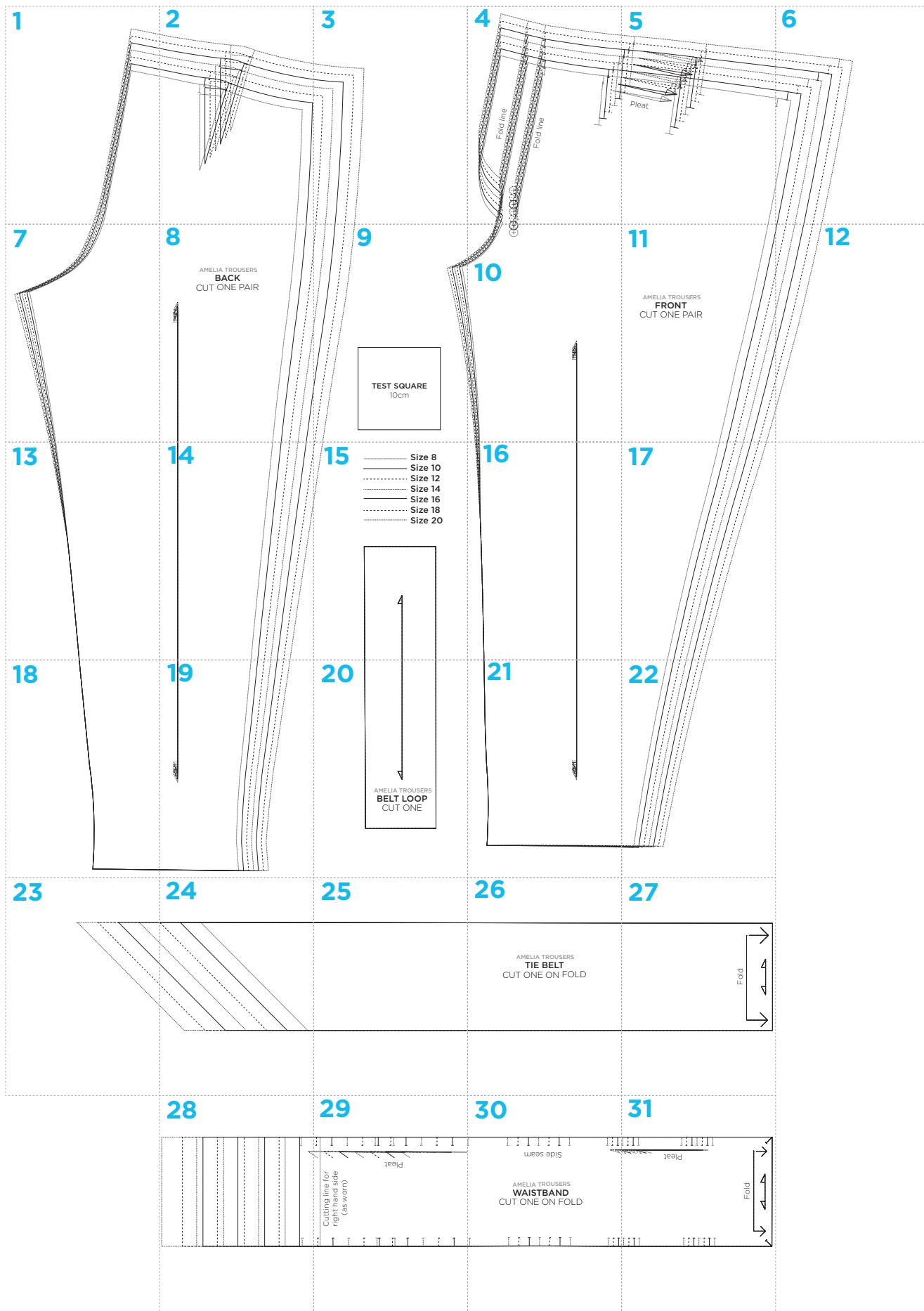
Use these guides to get started today

IN YOUR PRINT MENU, UNDER SIZE OPTIONS, BE SURE TO
SELECT TO PRINT 'ACTUAL SIZE', INSTEAD OF 'FIT TO PAGE'

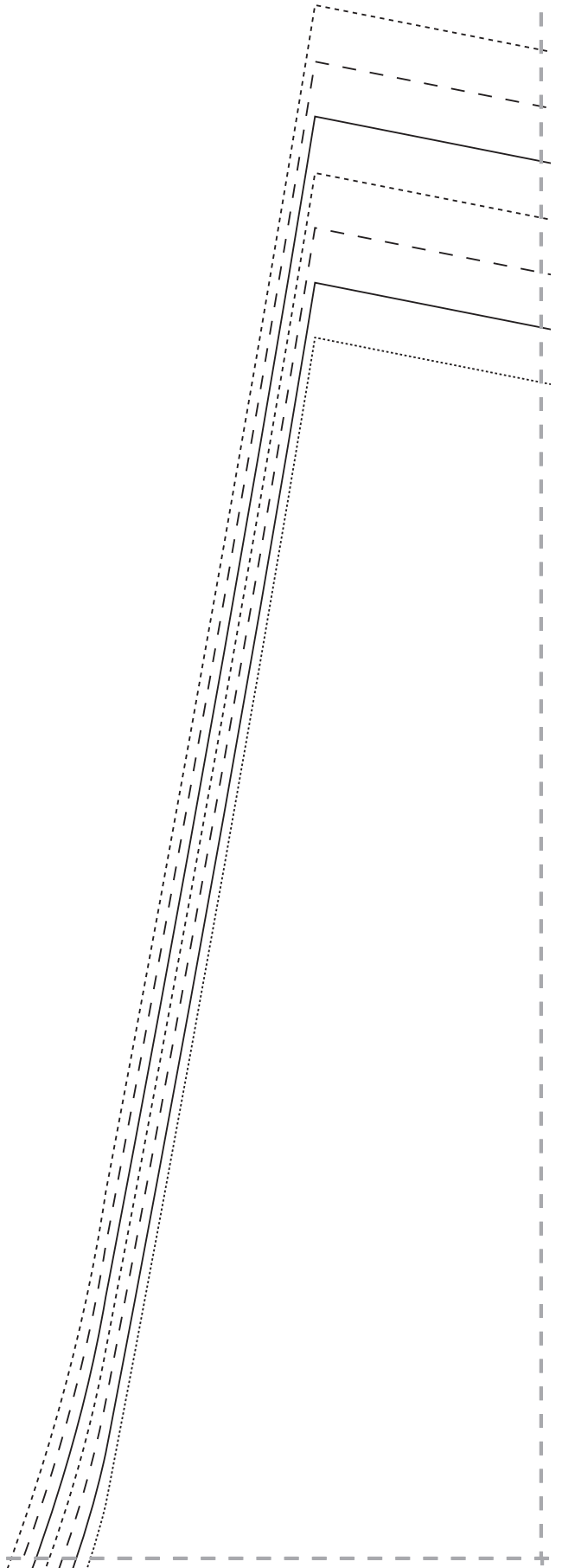
Title: Amelia trousers
Designer: Julia Claridge
Magazine page: 24



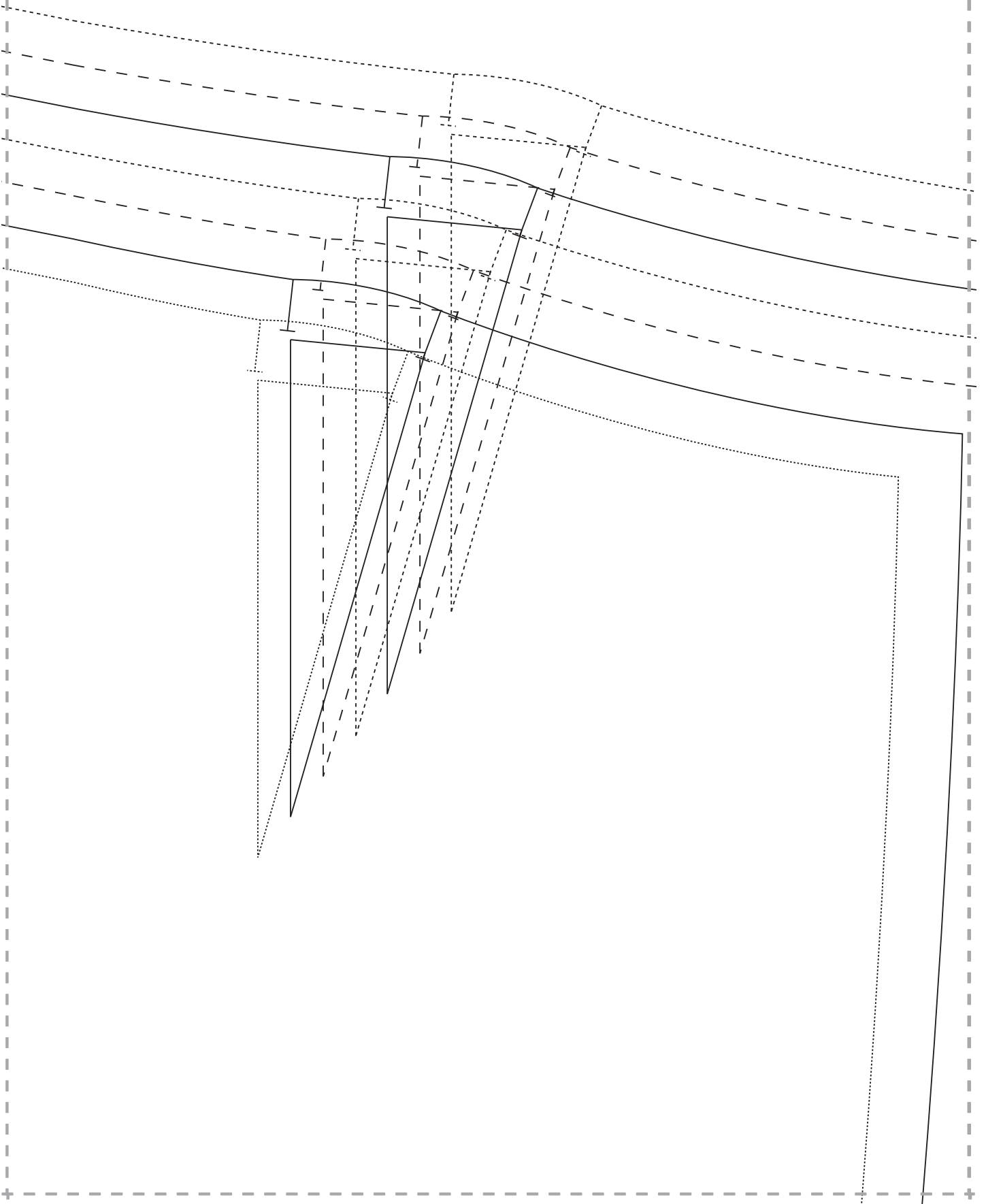
AMELIA TROUSERS PATTERN LAYOUT



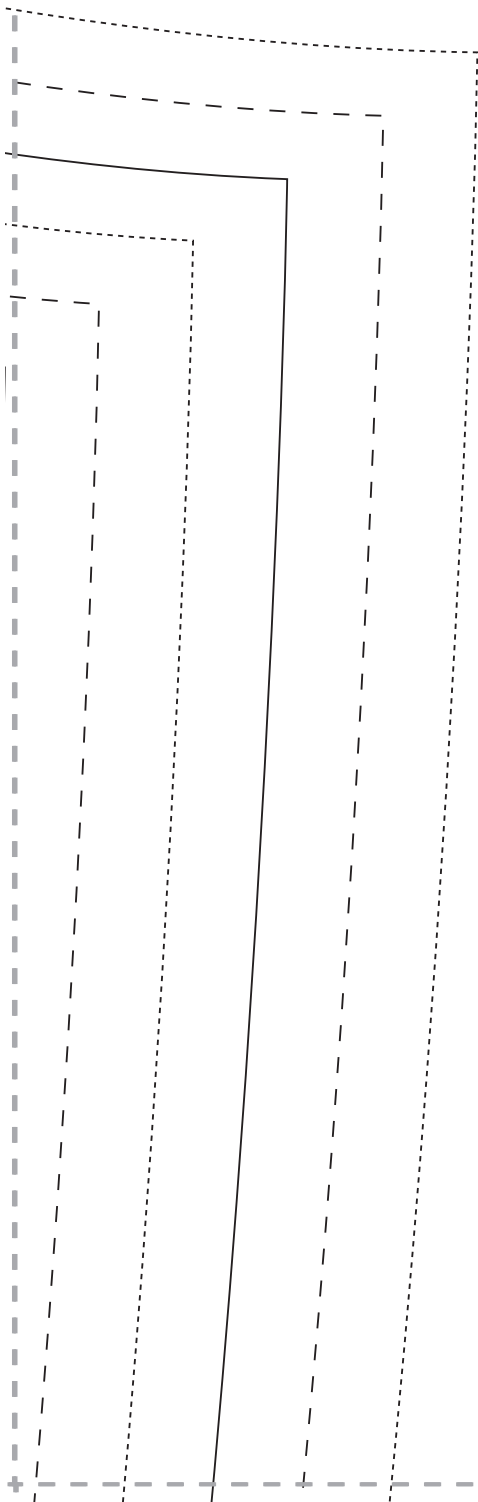
1



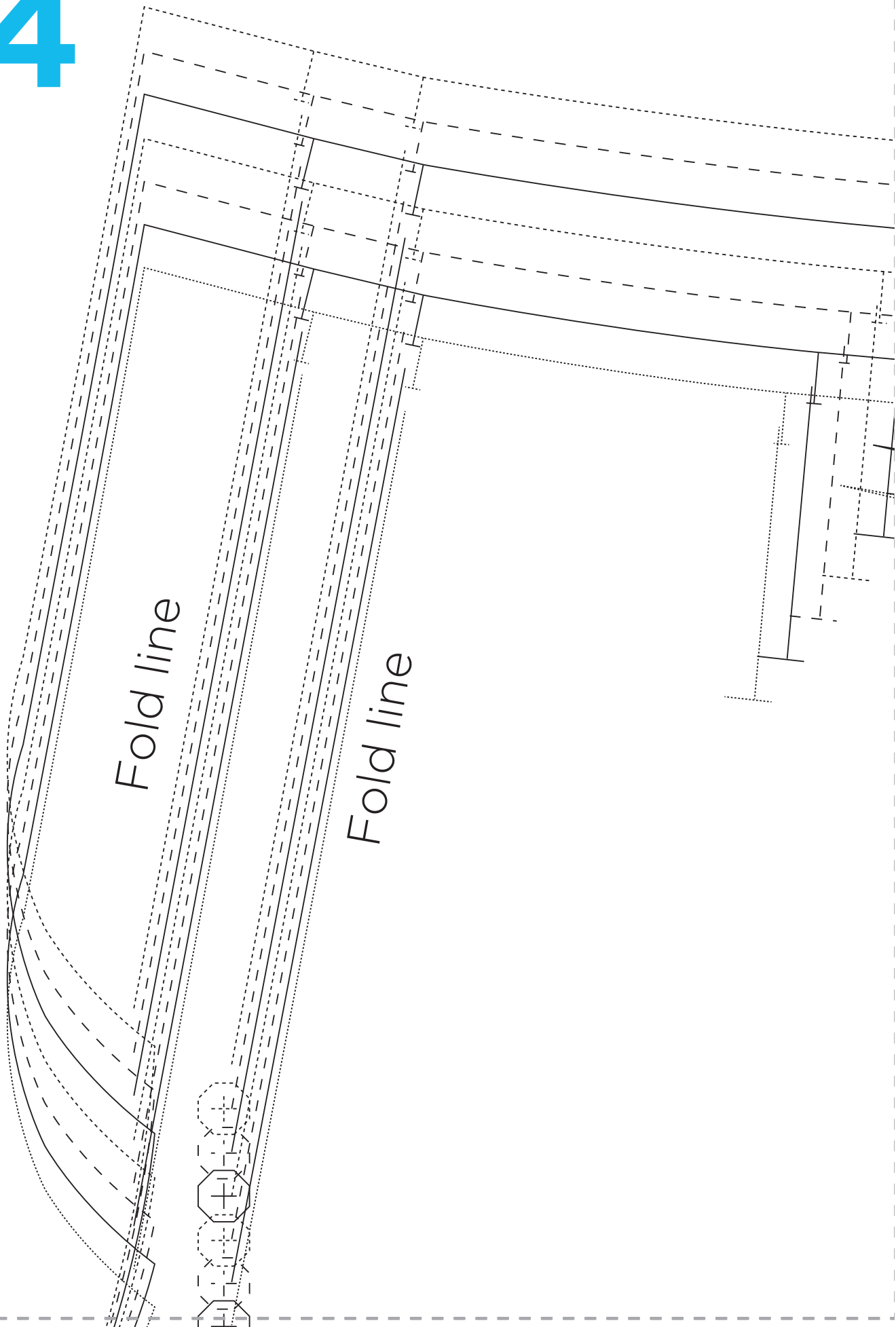
2



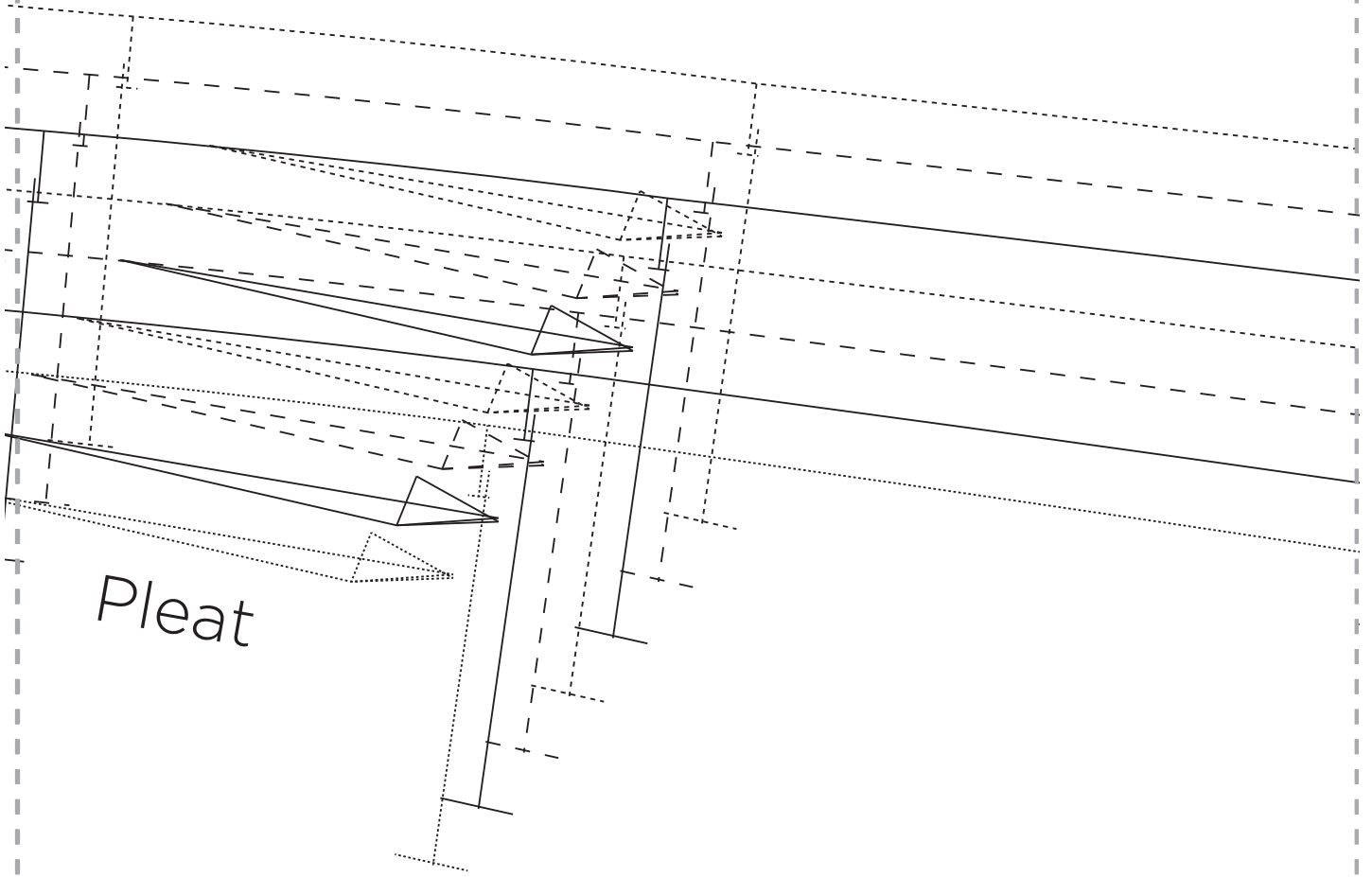
3



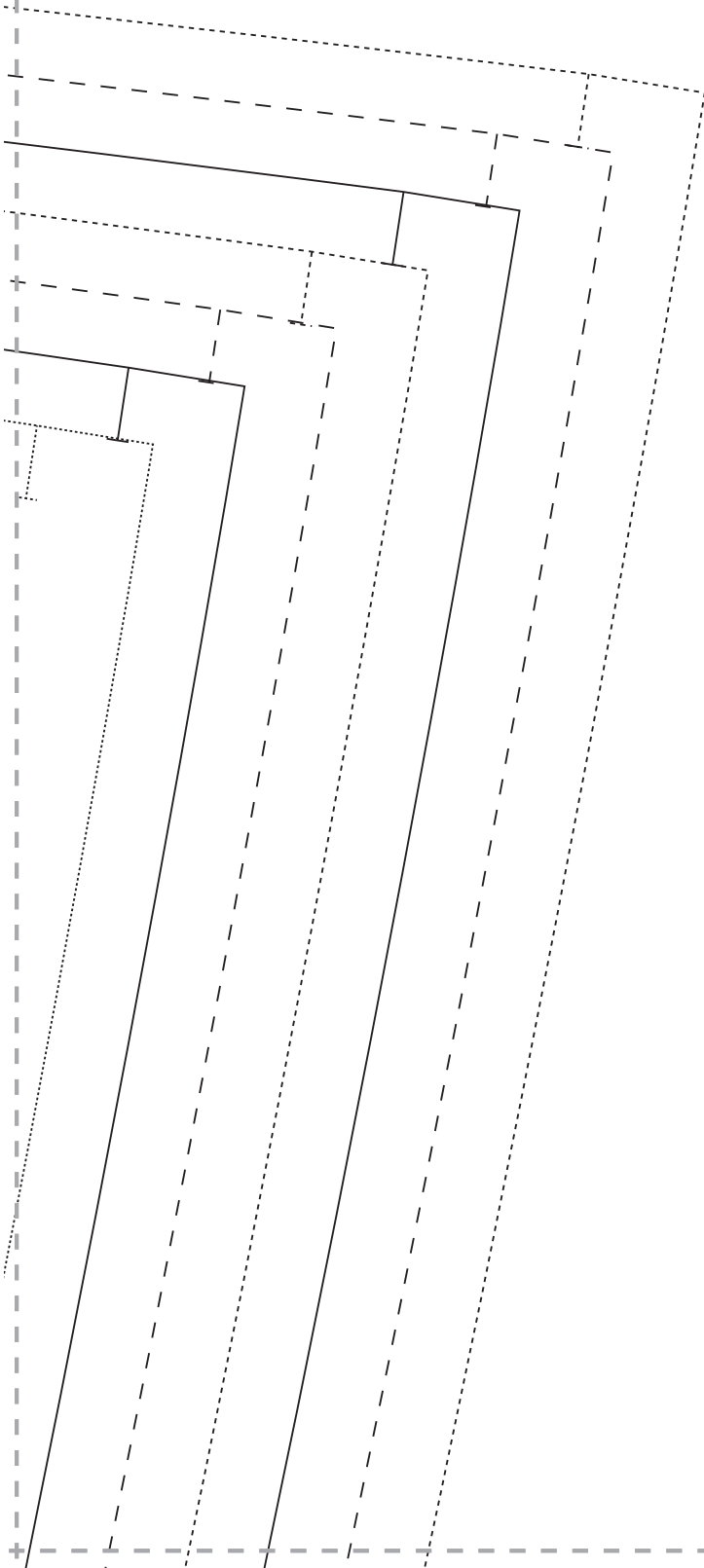
4



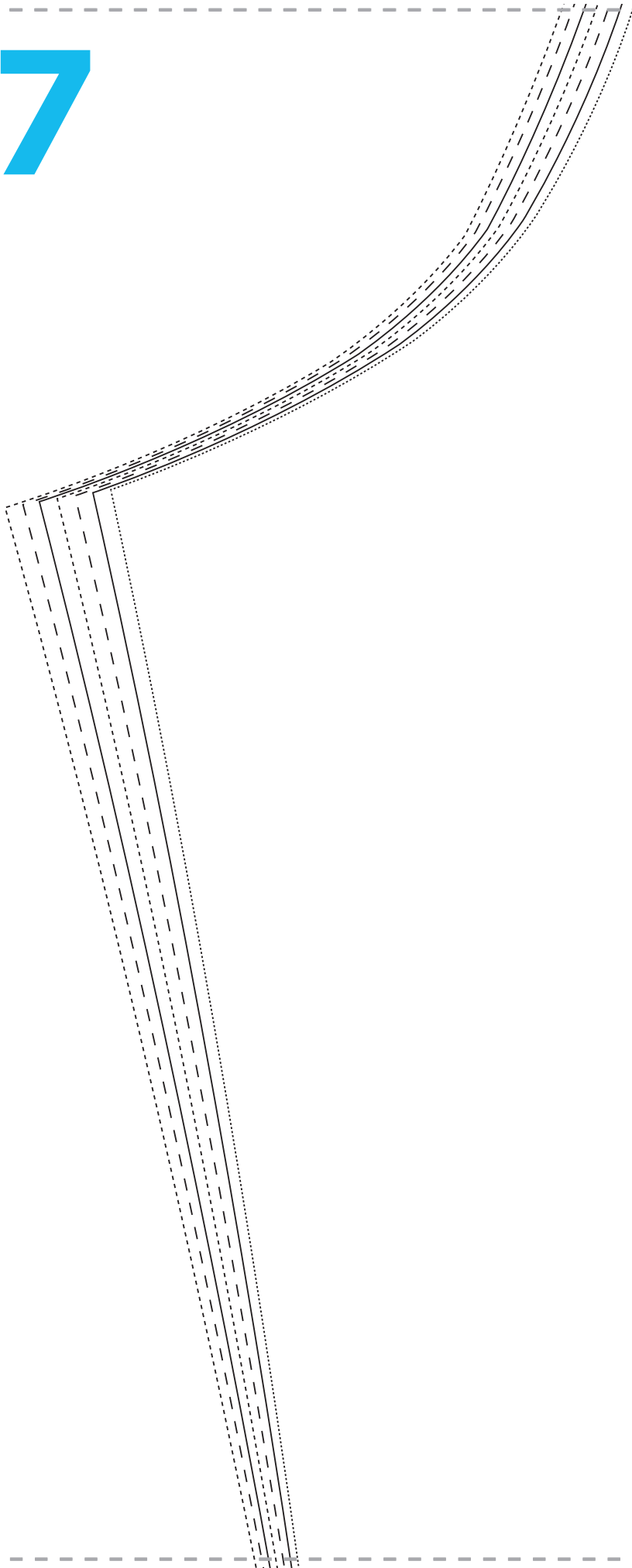
5



6

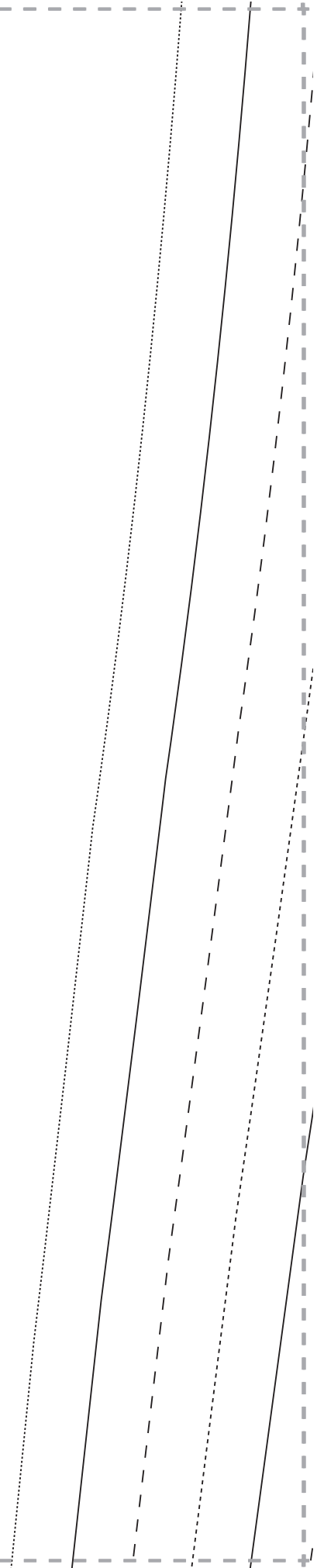


7



8

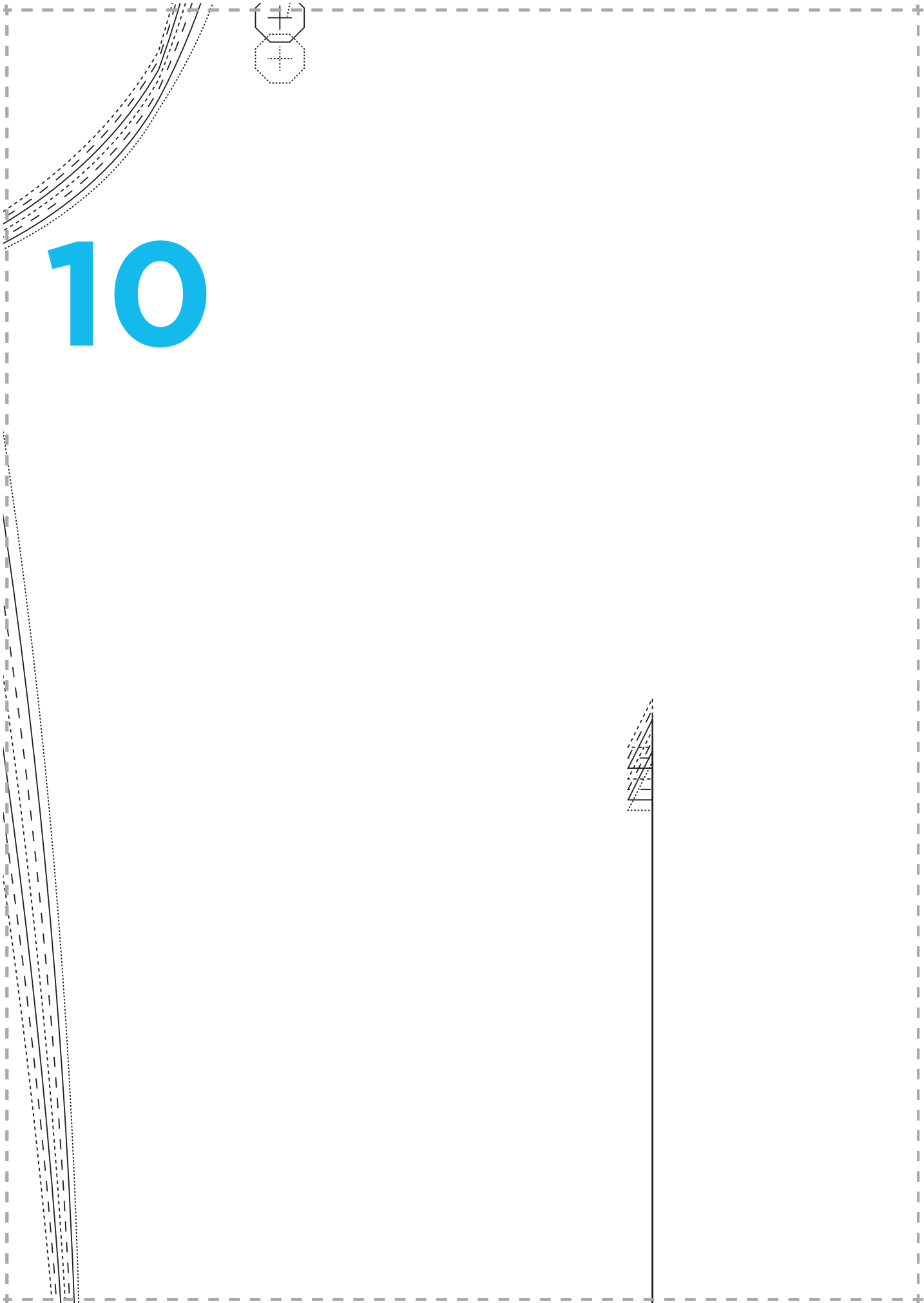
AMELIA TROUSERS
BACK
CUT ONE PAIR



9

TEST SQUARE

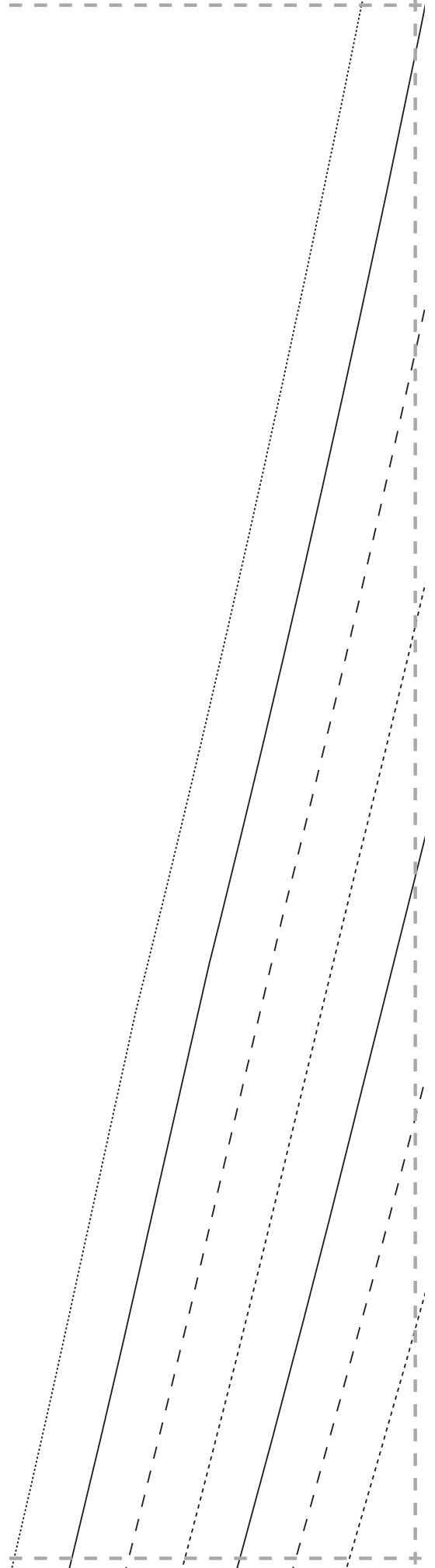
10cm



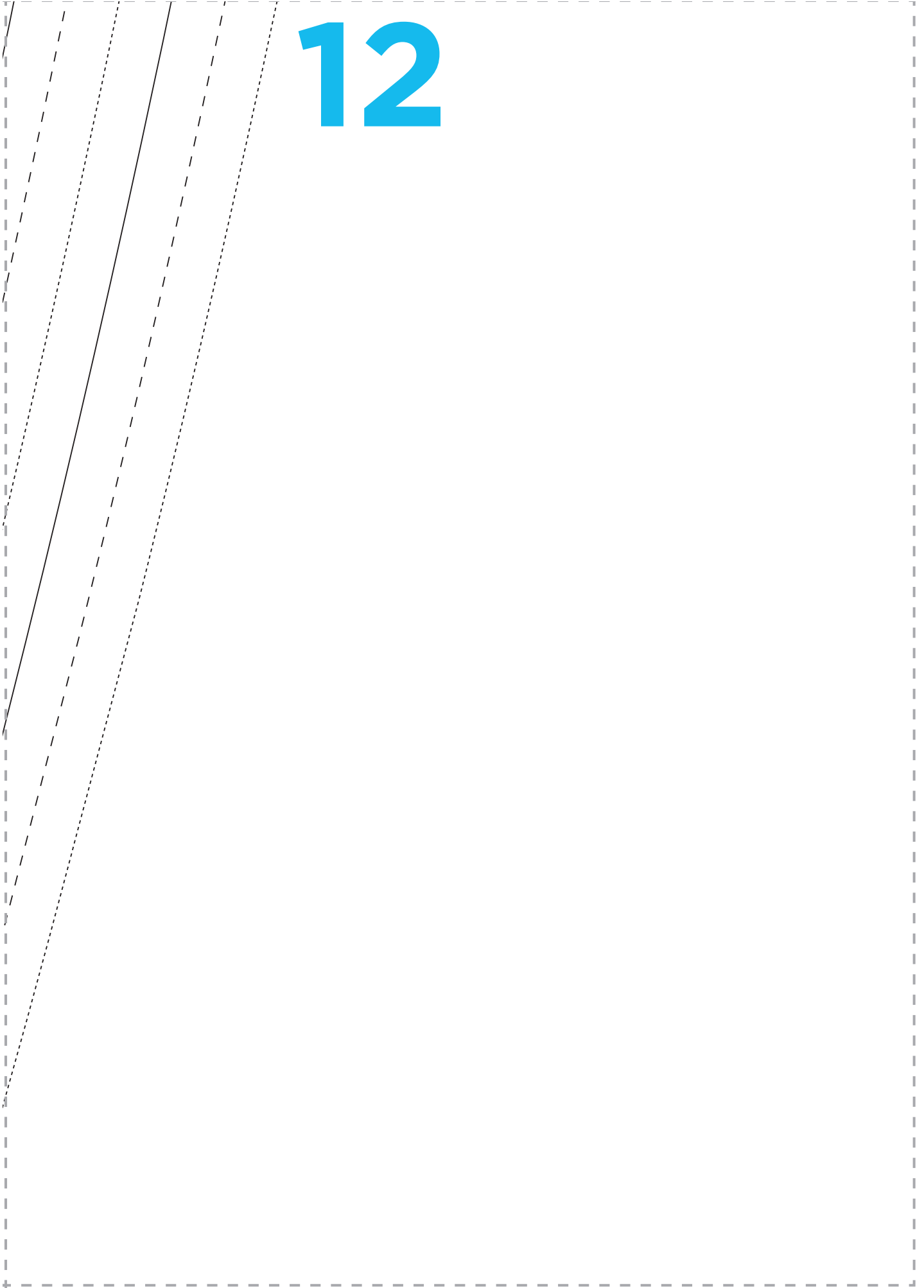
10

11

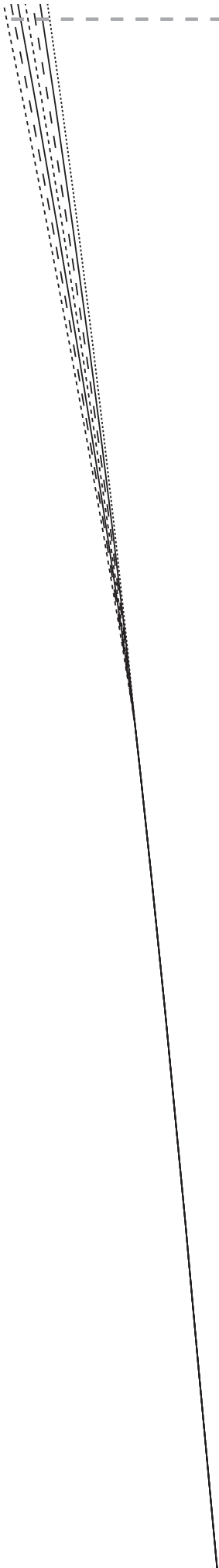
AMELIA TROUSERS
FRONT
CUT ONE PAIR



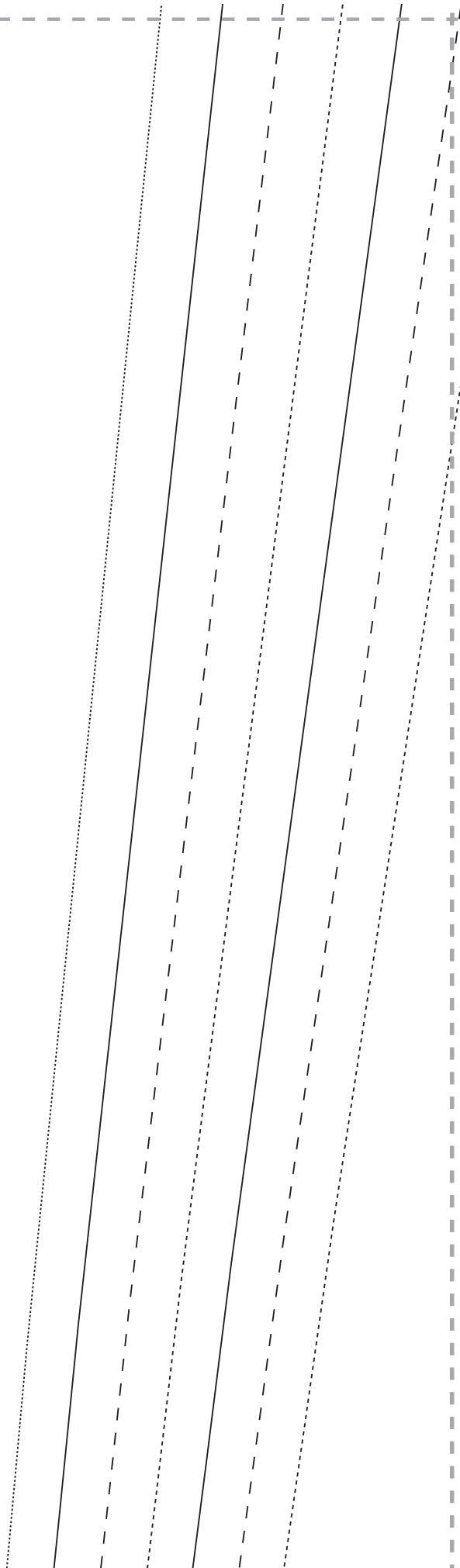
12



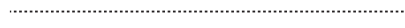
13



14



15



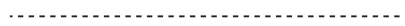
Size 8



Size 10



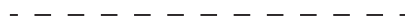
Size 12



Size 14



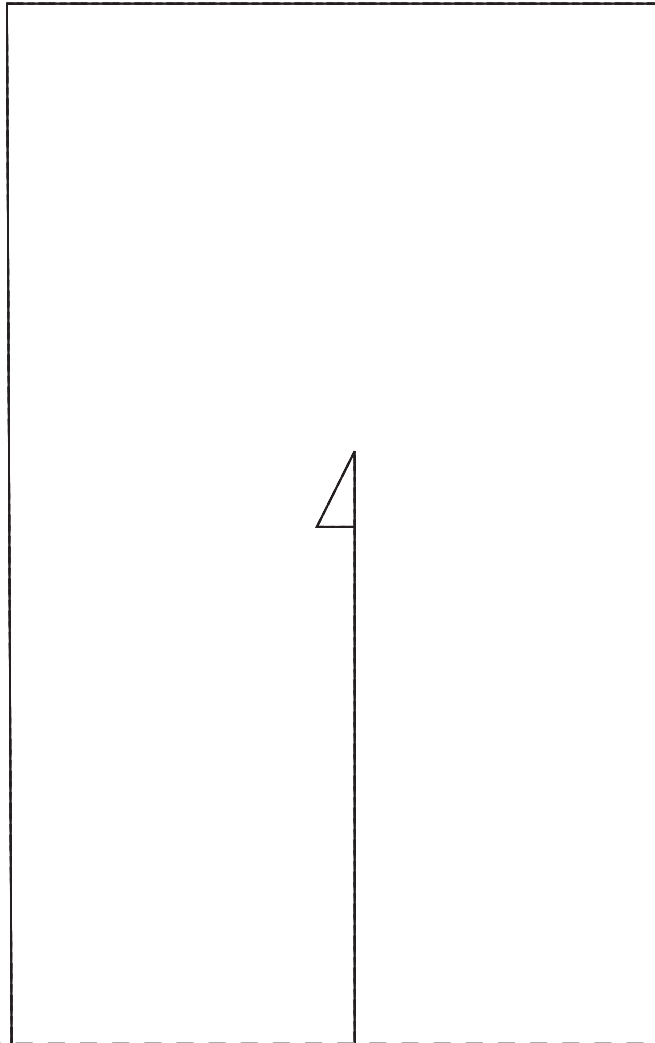
Size 16



Size 18

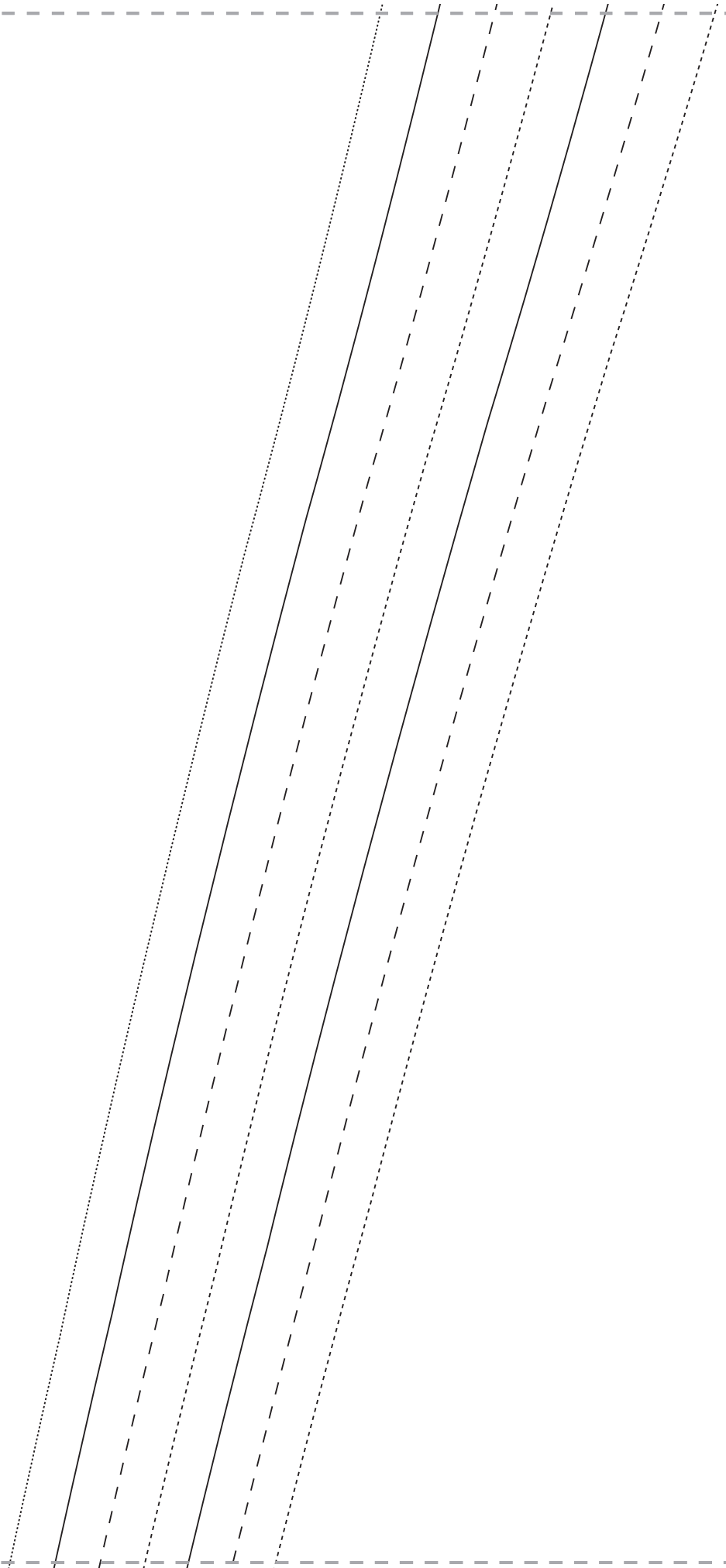


Size 20

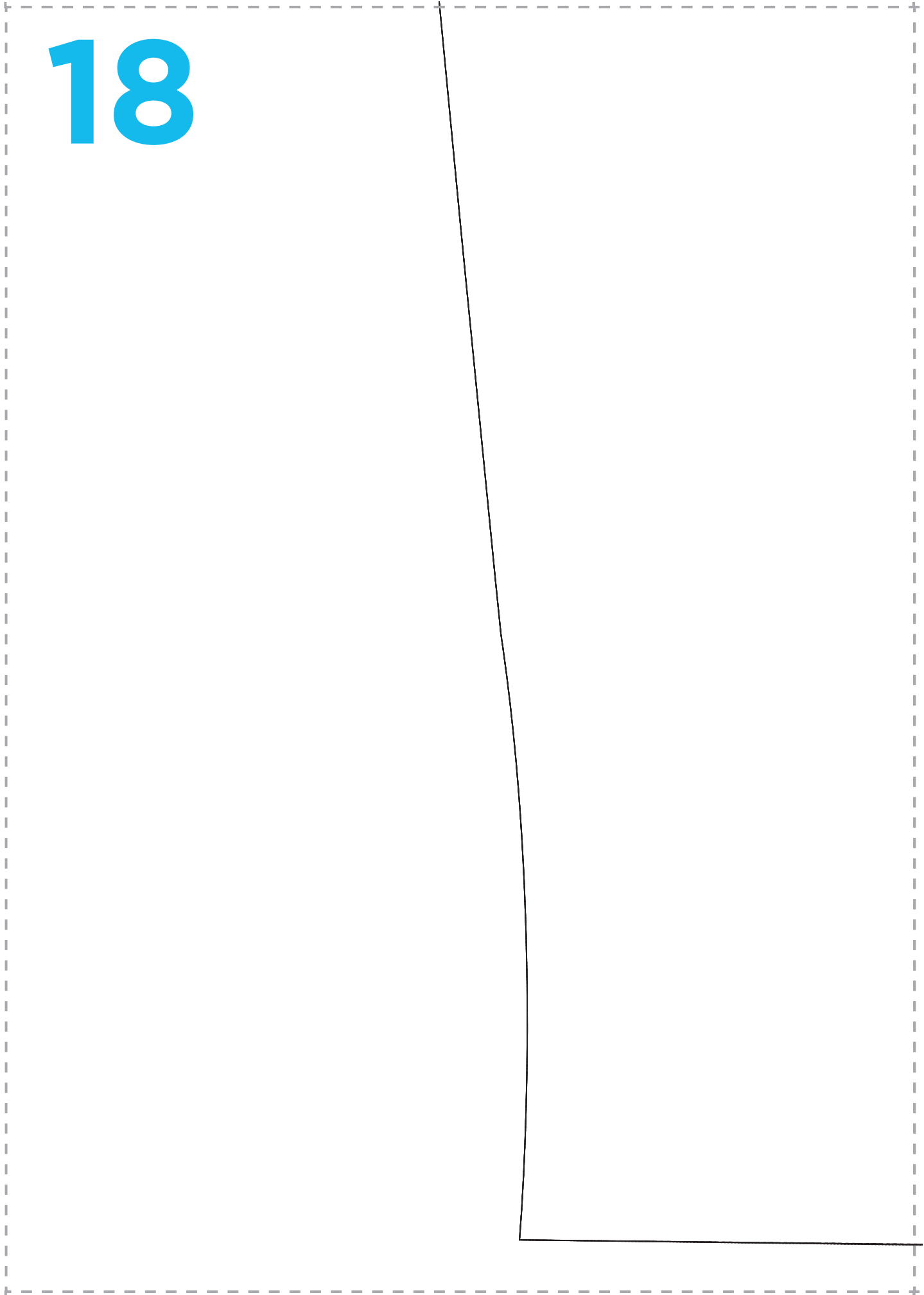


16

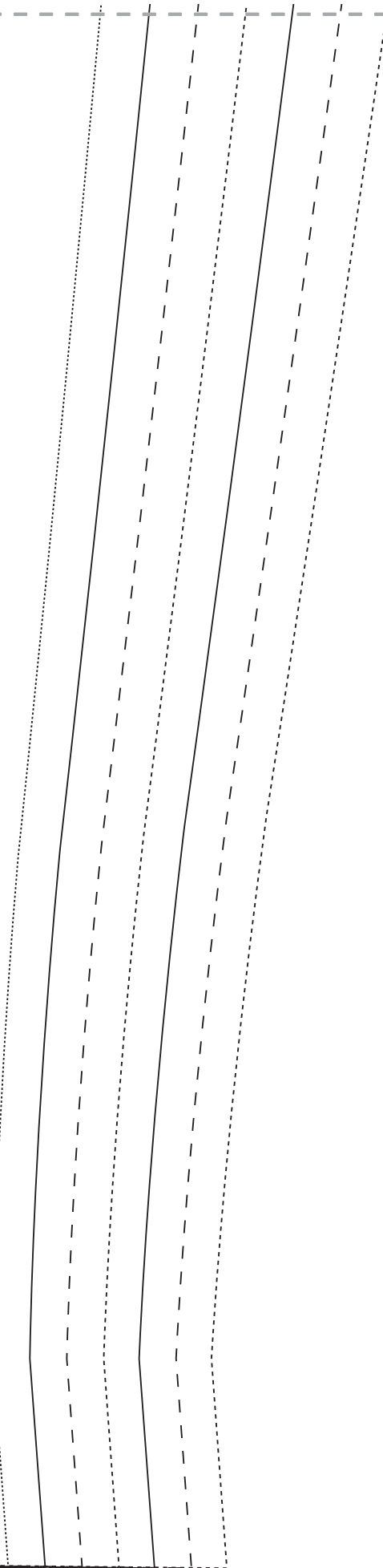
17



18



19



20

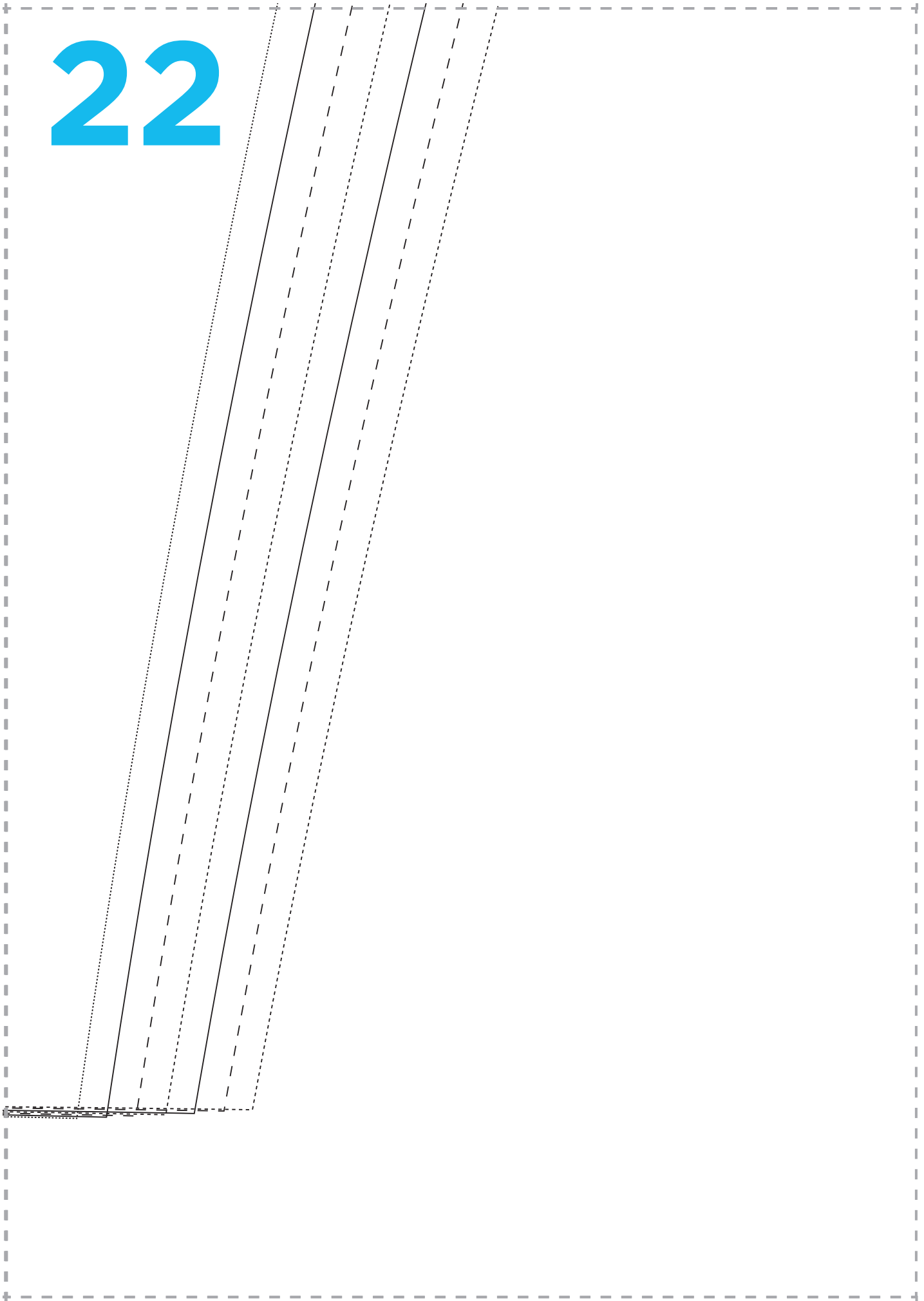


AMELIA TROUSERS
BELT LOOP
CUT ONE

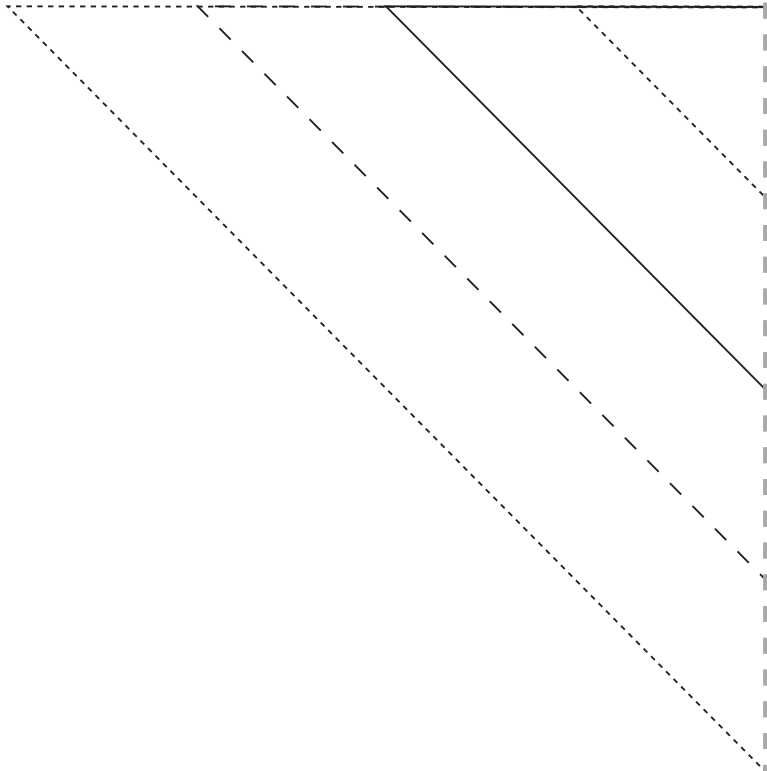
21



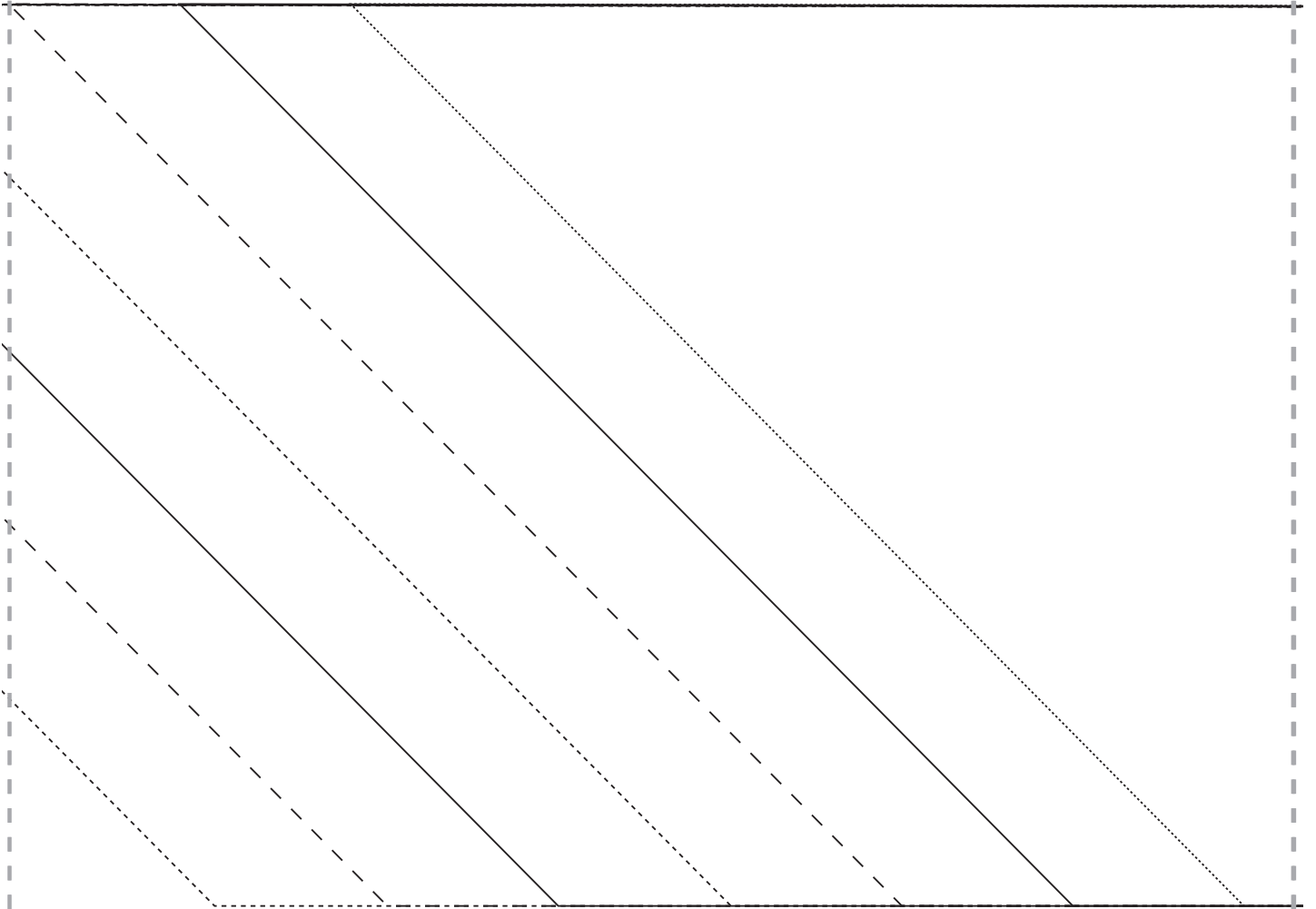
22



23



24



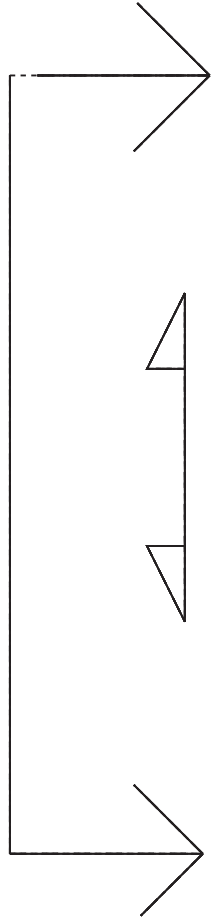
25

26

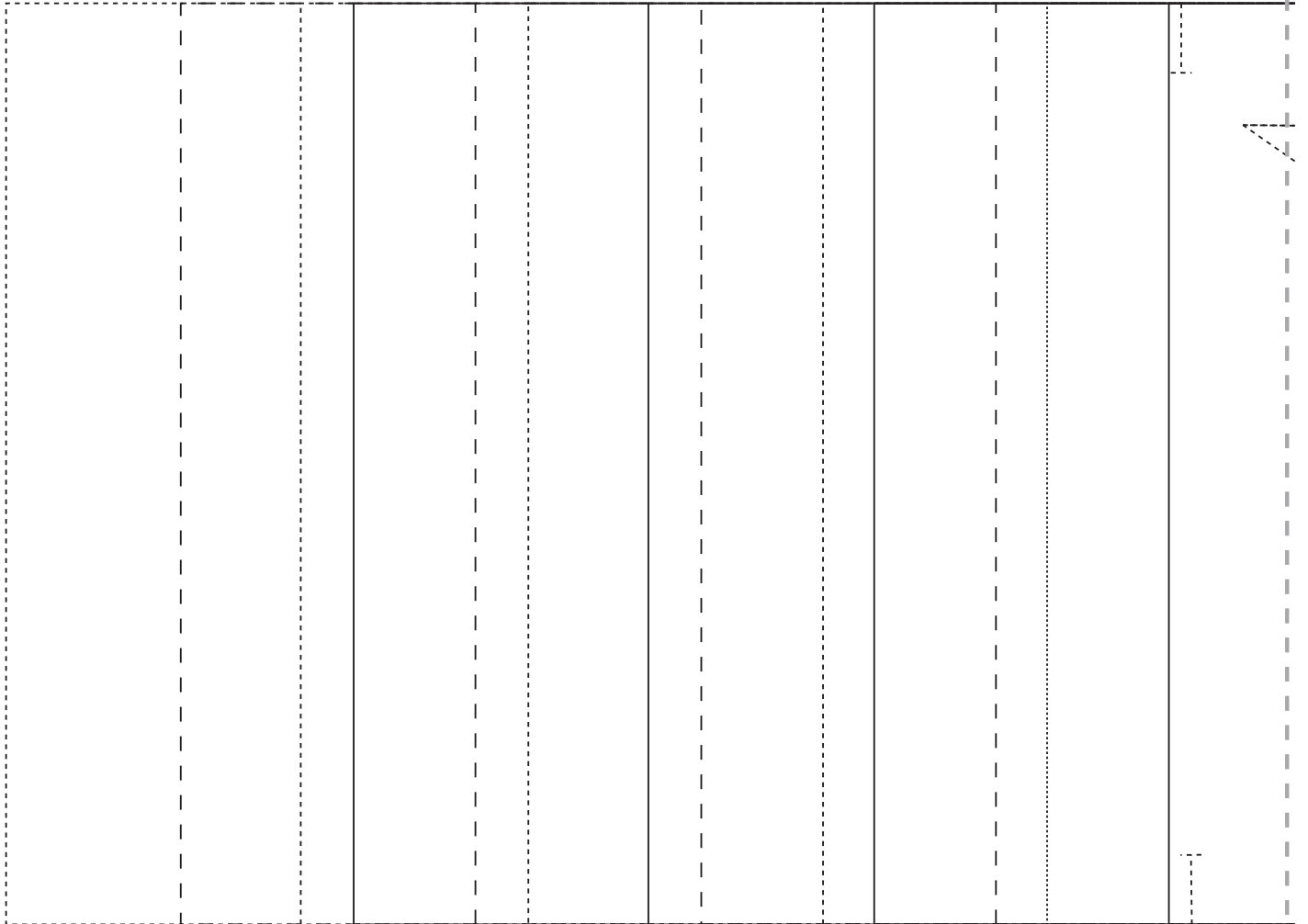
AMELIA TROUSERS
TIE BELT
CUT ONE ON FOLD

27

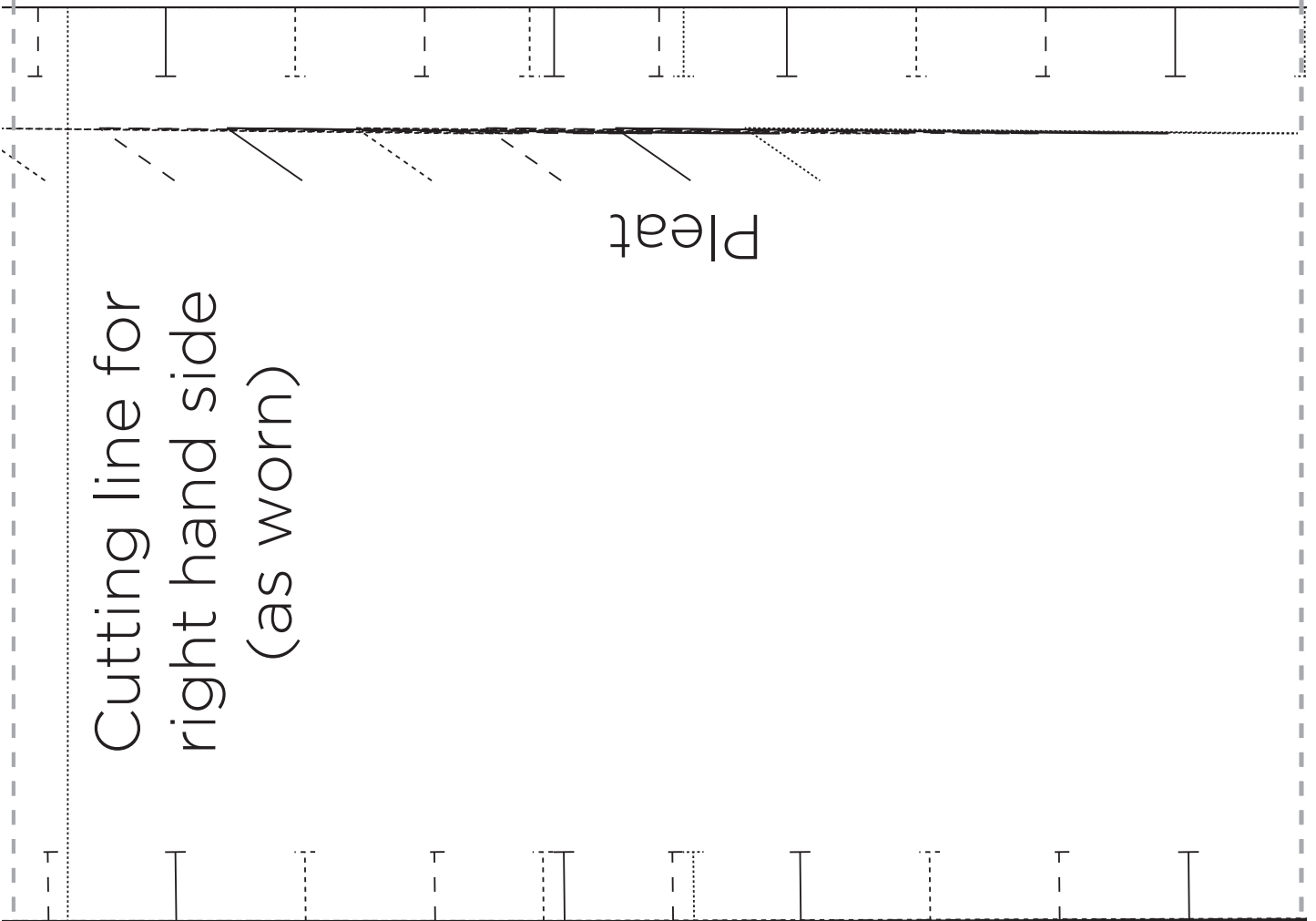
Fold



28



29



Cutting line for
right hand side
(as worn)

30

Side seam



AMELIA TROUSERS
WAISTBAND
CUT ONE ON FOLD

31

