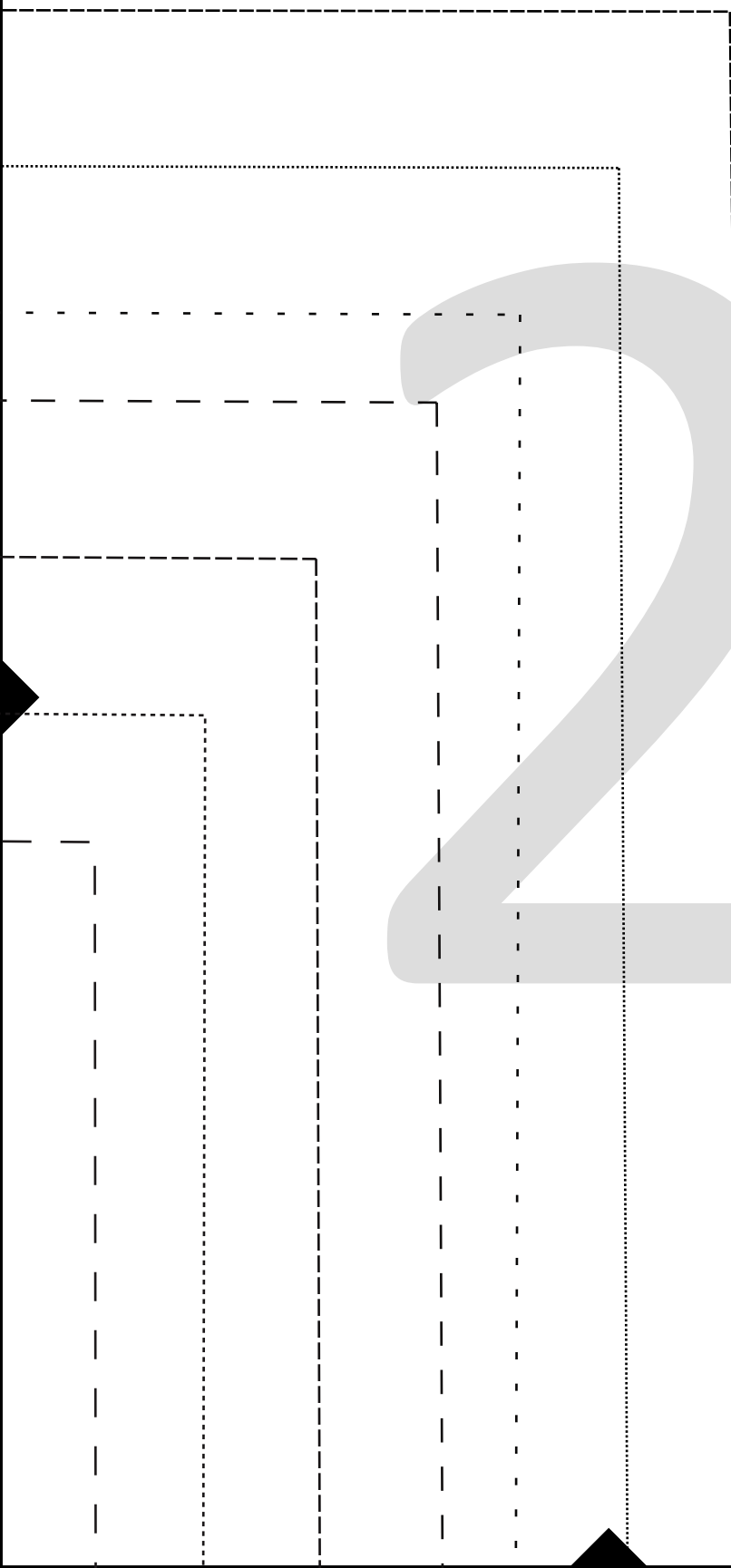
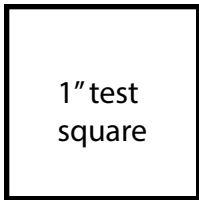


LIFE SEW SAVORY - BOYS FREE T-SHIRT PATTERN









SHORT AND LONG SLEEVES. SIZE 2-14Y FULL TUTORIAL HERE: [HTTPS://LIFESEWSAVO](https://lifesewsavory.com)



Direction of greatest stretch



Size Key

- 2T 
- 3T 
- 4/5T 
- 6/7Y 
- 8Y 
- 10/12Y 
- 13 Y 
- 14+Y 

LIFE SEW SAVORY

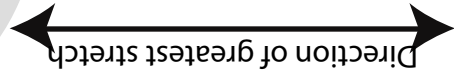
# Boys T-Shirt Free Pattern

Shirt Short Sleeve

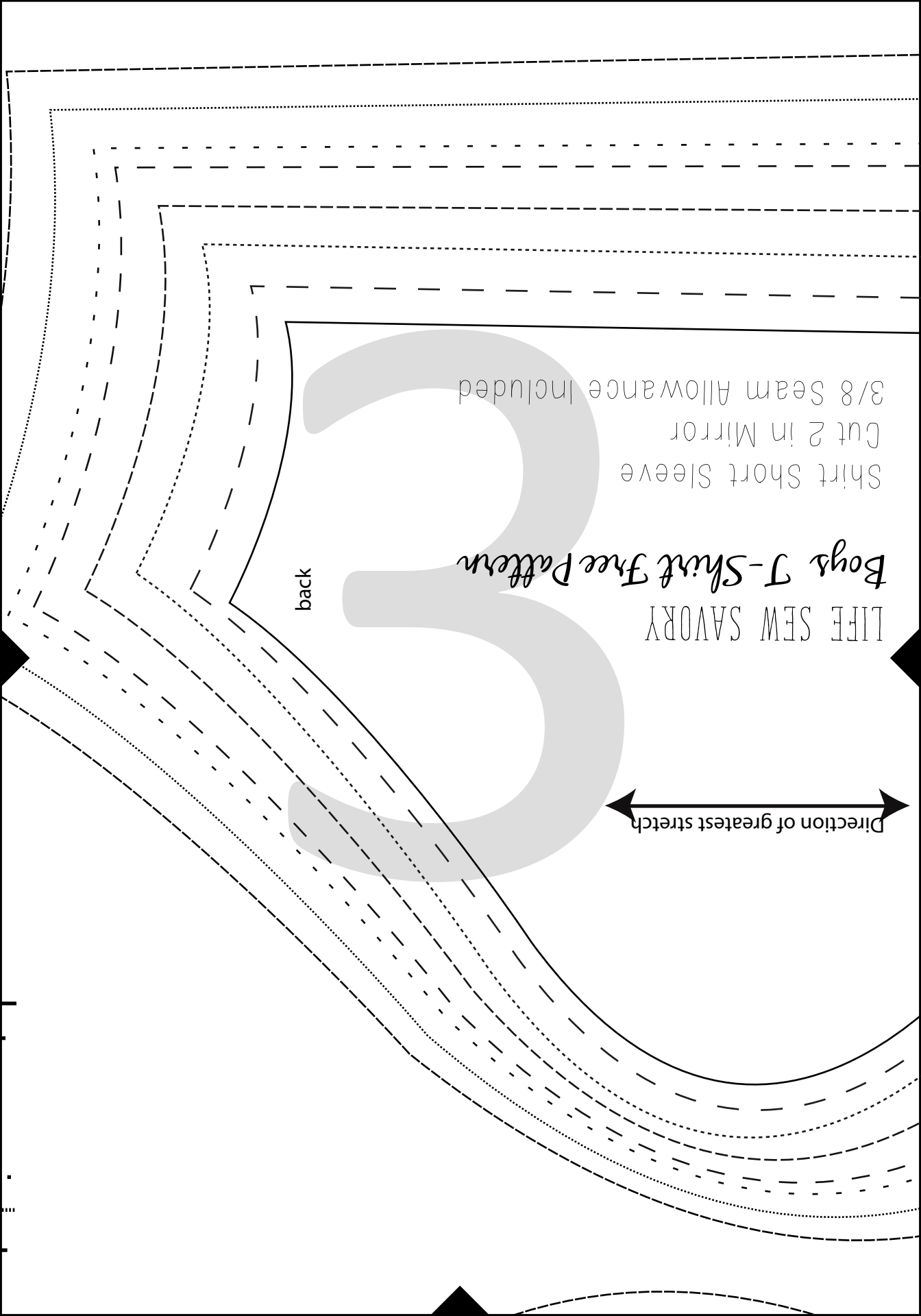
Cut 2 in Mirror

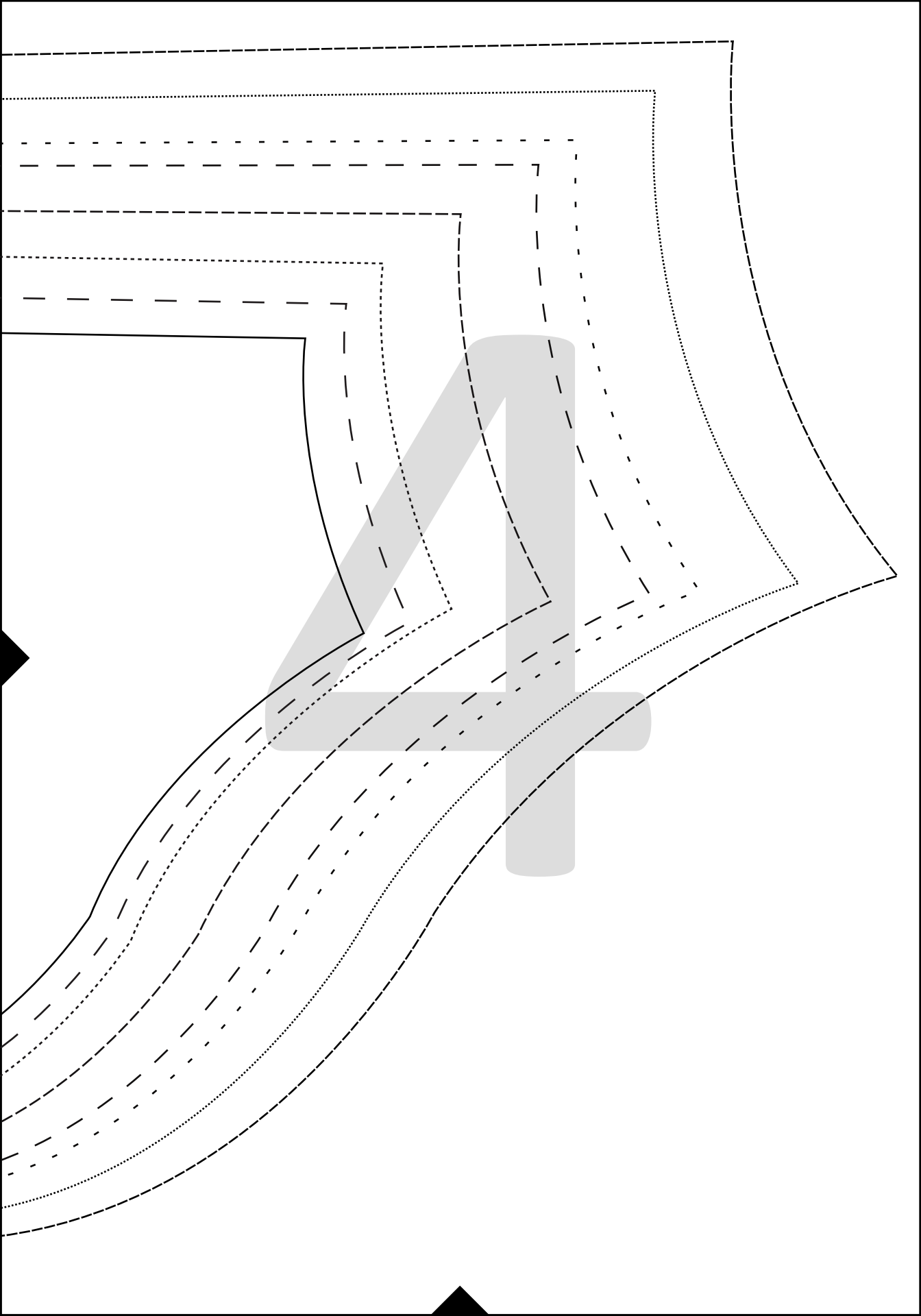
3/8 Seam Allowance Included

Direction of greatest stretch



back





Boys T-Shirt Size Chart		Height in IN/CM	
Size	Chest in IN/CM	20/50	2
3	21-22/53-56		
4/5	23-24/58-61	39-41/99-104	
6/7	25-26/63-66	42-44/106-111	
8	27/68	45-47/114-119	
10/12	28-29/71-74	48-50/122-127	
13/14	30-31/76-79	51-56/129-142	
14+	32+/81	60+/152	Can easily lengthen shirt if chest still in range

Start with the chest and age, but if your child is extremely tall or short or wide or narrow for the chart you will have to blend sizes...

*Fold*

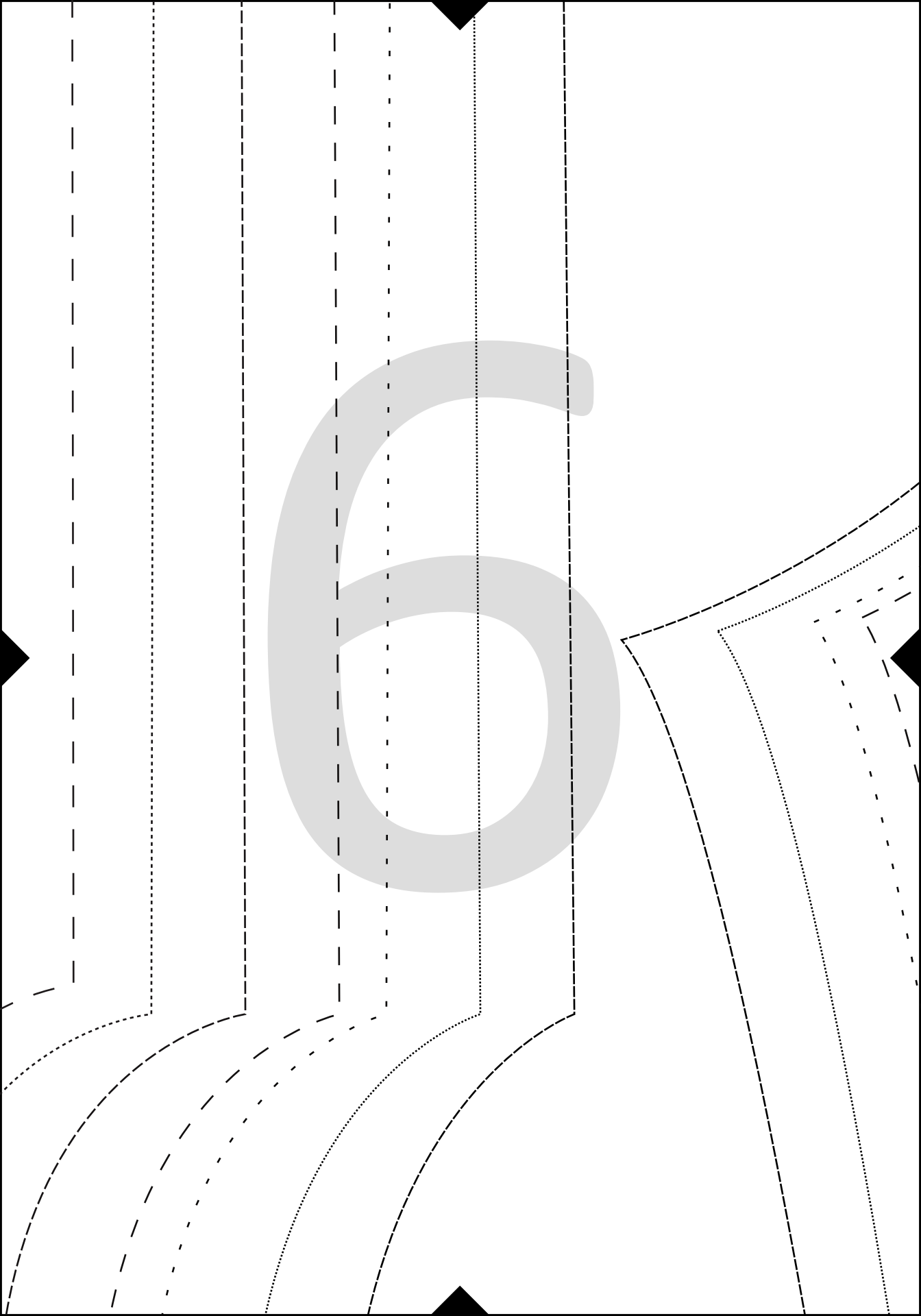
LIFE SEW SAVORY

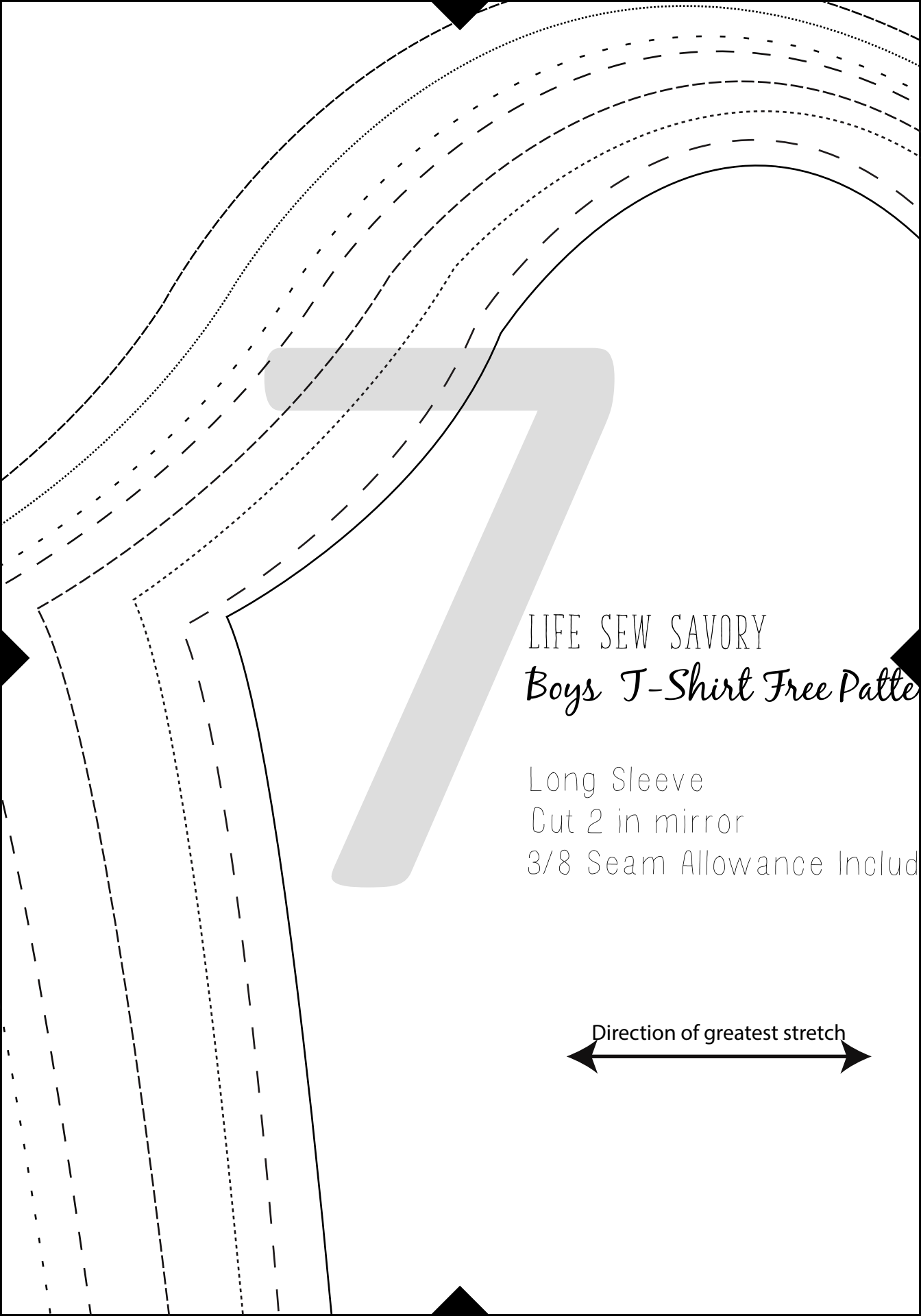
# Boys T-Shirt Free Pattern

Shirt Back

Cut 1 on Fold

3/8 Seam Allowance Included





LIFE SEW SAVORY

*Boys T-Shirt Free Pattern*

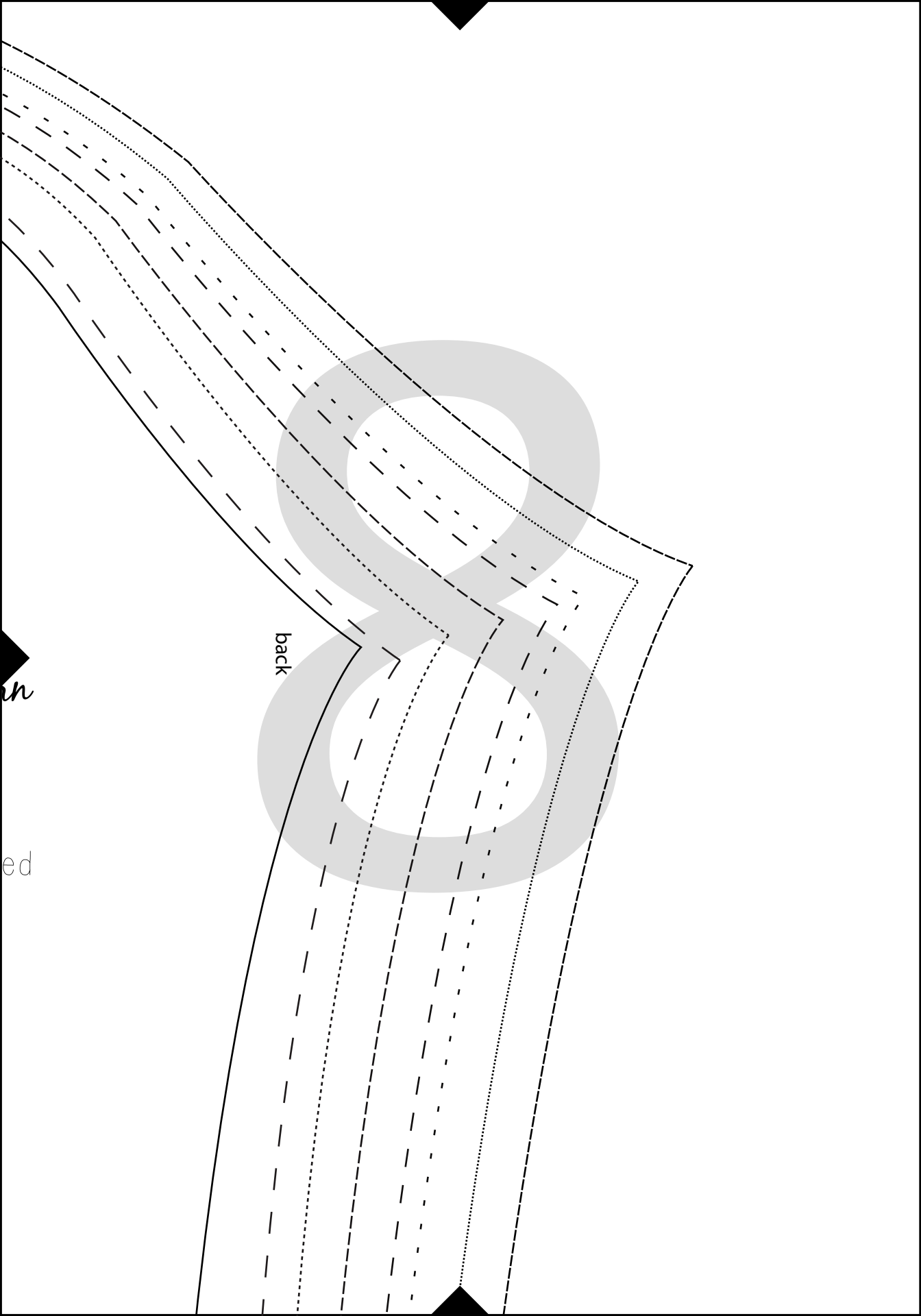
Long Sleeve

Cut 2 in mirror

3/8 Seam Allowance Included

Direction of greatest stretch



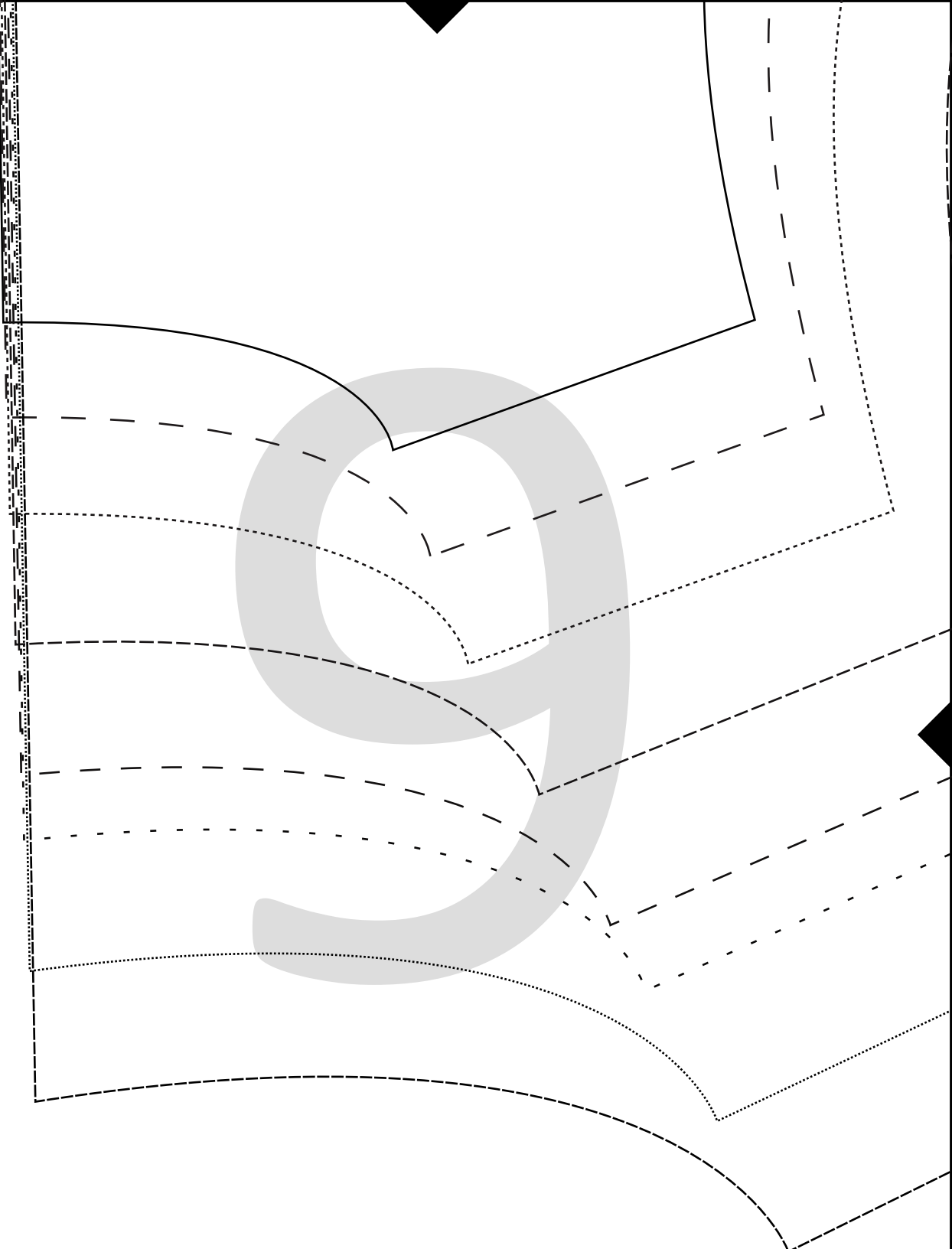


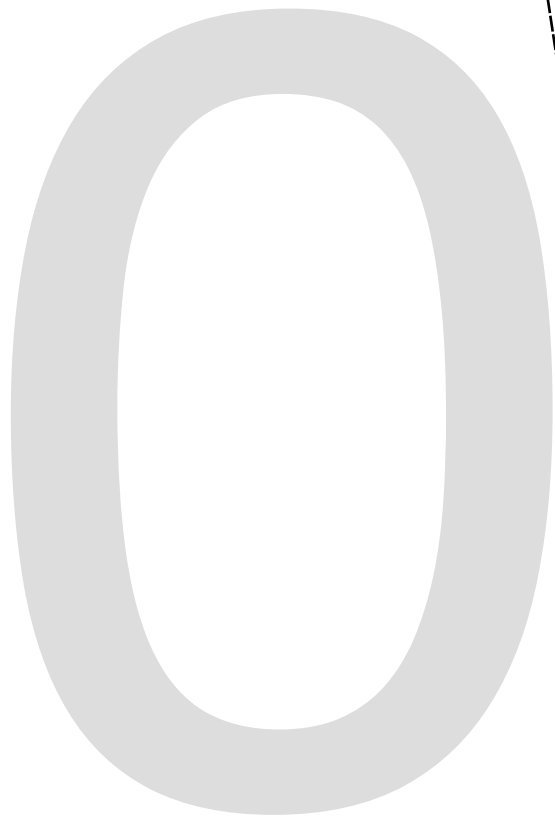
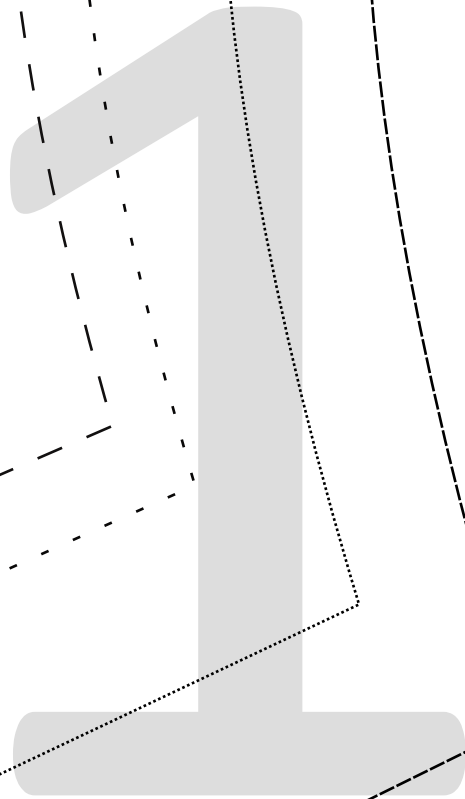
back

rn

ed

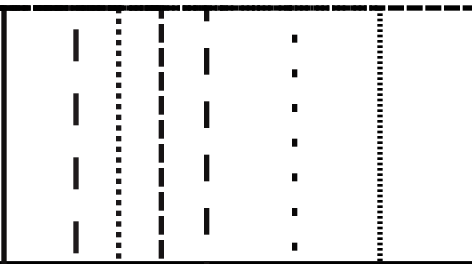


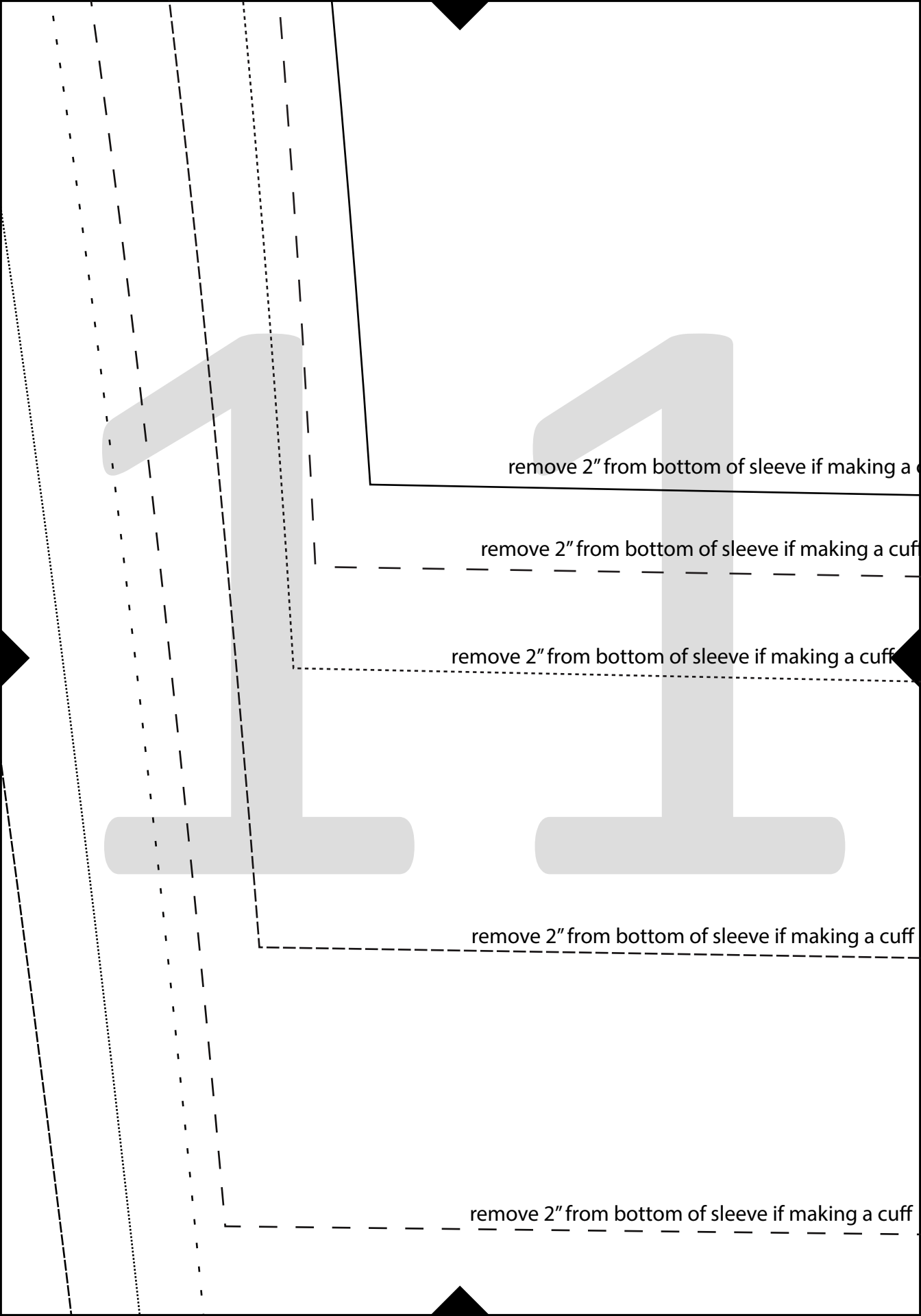




SEW SAVORY

*T-Shirt Free Pattern*





remove 2" from bottom of sleeve if making a cuff

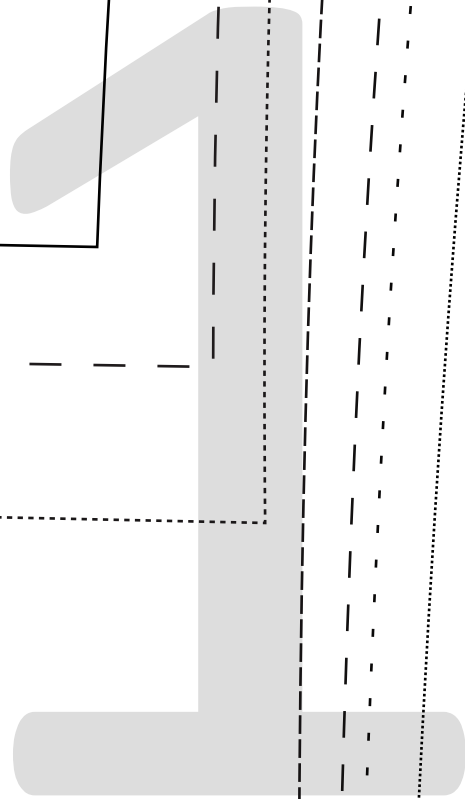
remove 2" from bottom of sleeve if making a cuff

remove 2" from bottom of sleeve if making a cuff

remove 2" from bottom of sleeve if making a cuff

remove 2" from bottom of sleeve if making a cuff

uff



Sleeve  
Cut 2  
3/8 S

LIFE SEW SAVORY  
*Boys T-Shirt Free Pattern*

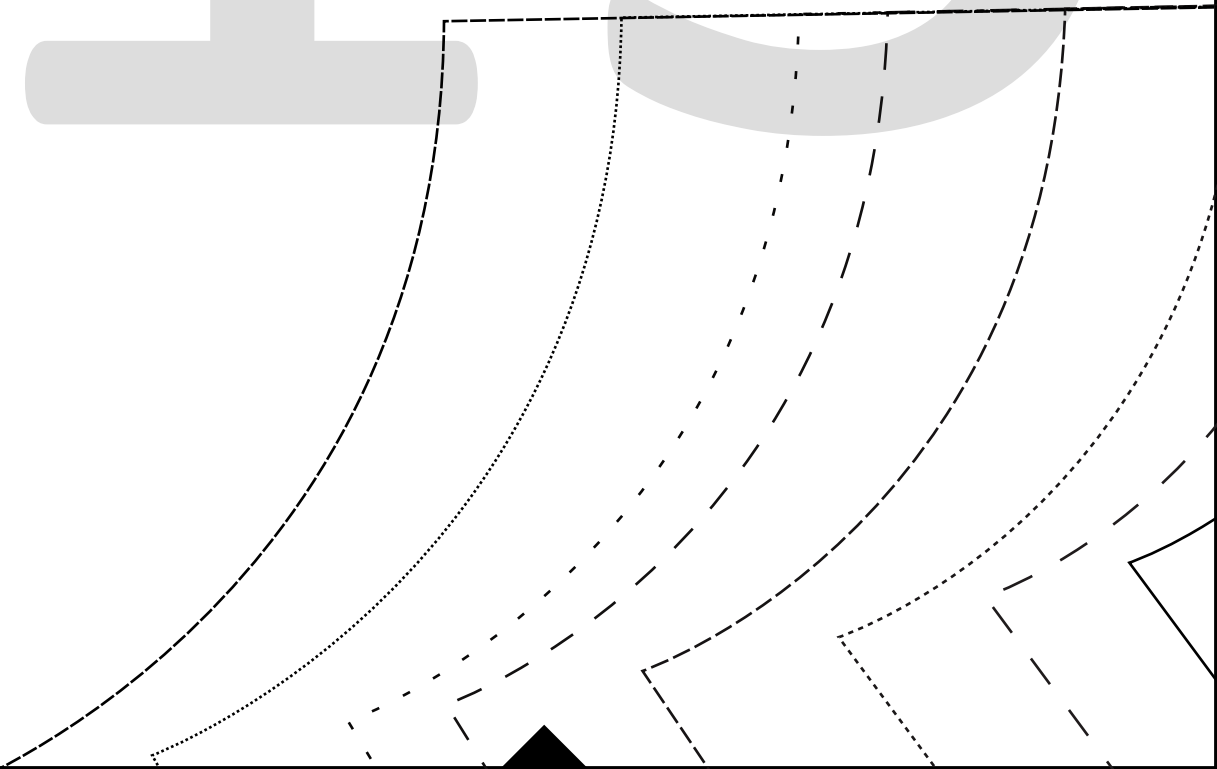
Shirt Pocket {optional}  
Cut 1

pocket for 2/3

pocket for 4-7

pocket for 8-12

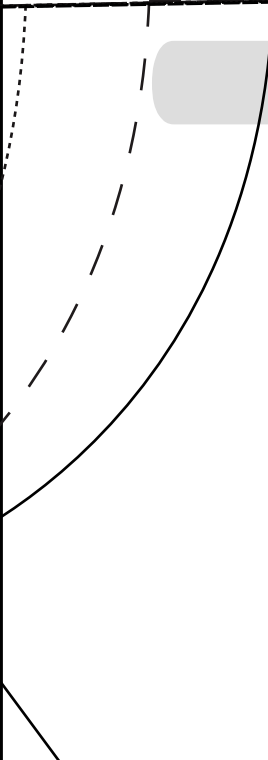
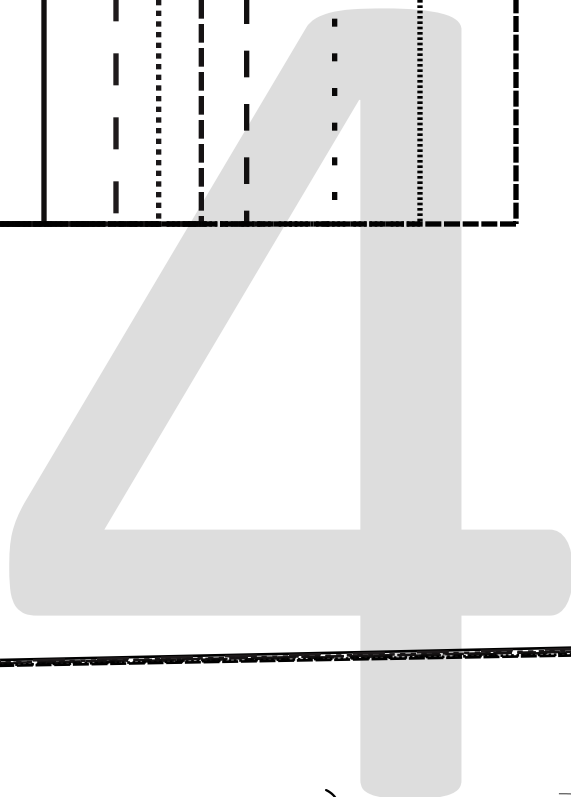
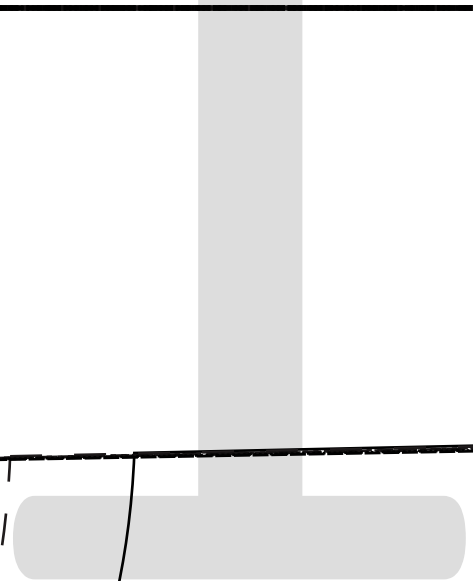
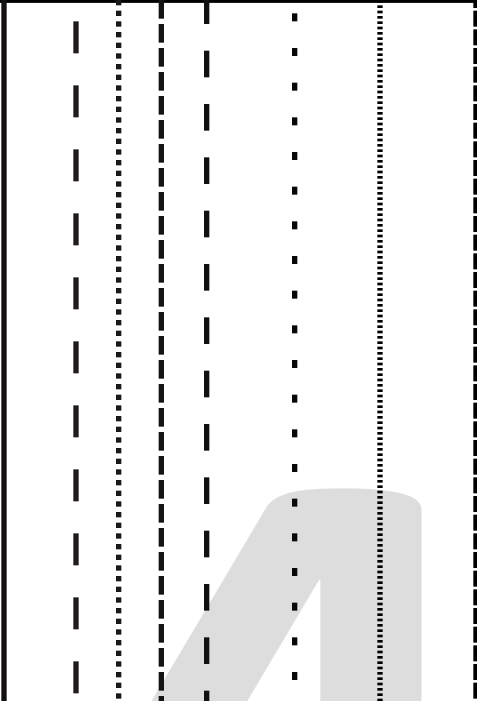
pocket for 13/14



the Cuff {optional}

Seam Allowance Included

Direction of greatest stretch



LIFE SEW SAVORY

*Boys T-Shirt Free Pattern*

Shirt Front

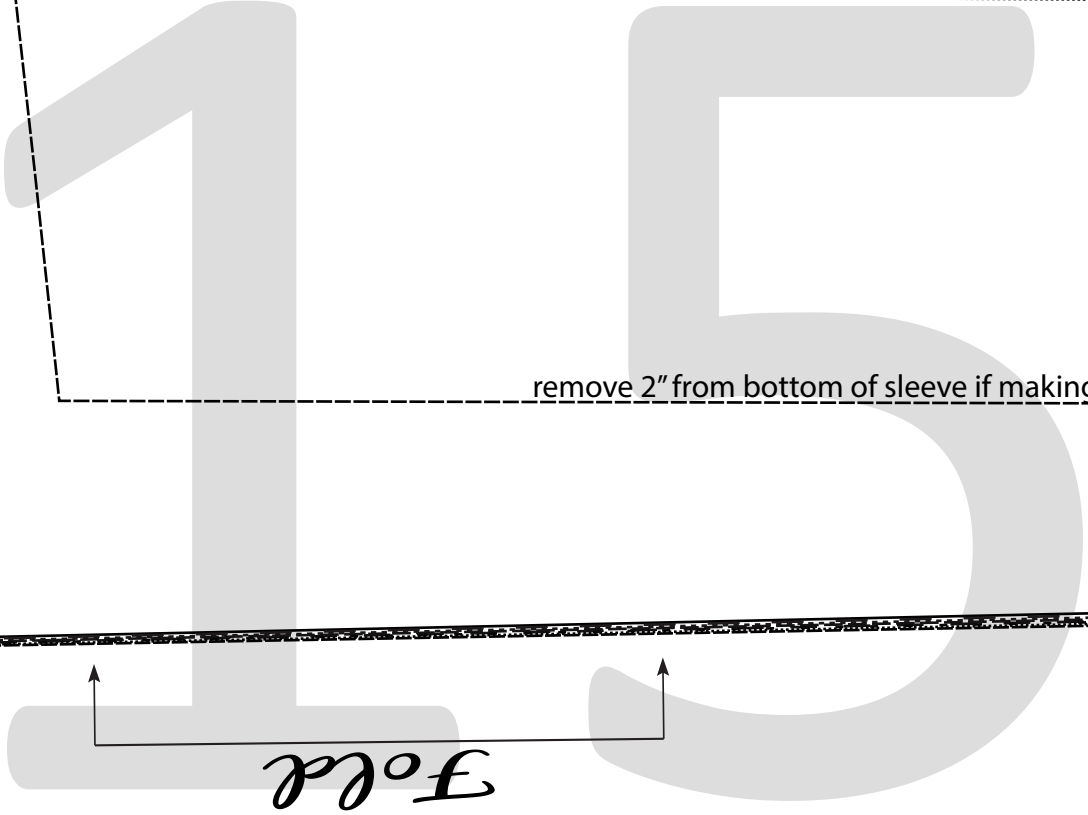
Cut 1 on Fold

3/8 Seam Allowance Included

remove 2" from bottom of sleeve if making a cuff

remove 2" from bottom of sleeve if making a cuff

remove 2" from bottom of sleeve if making a cuff

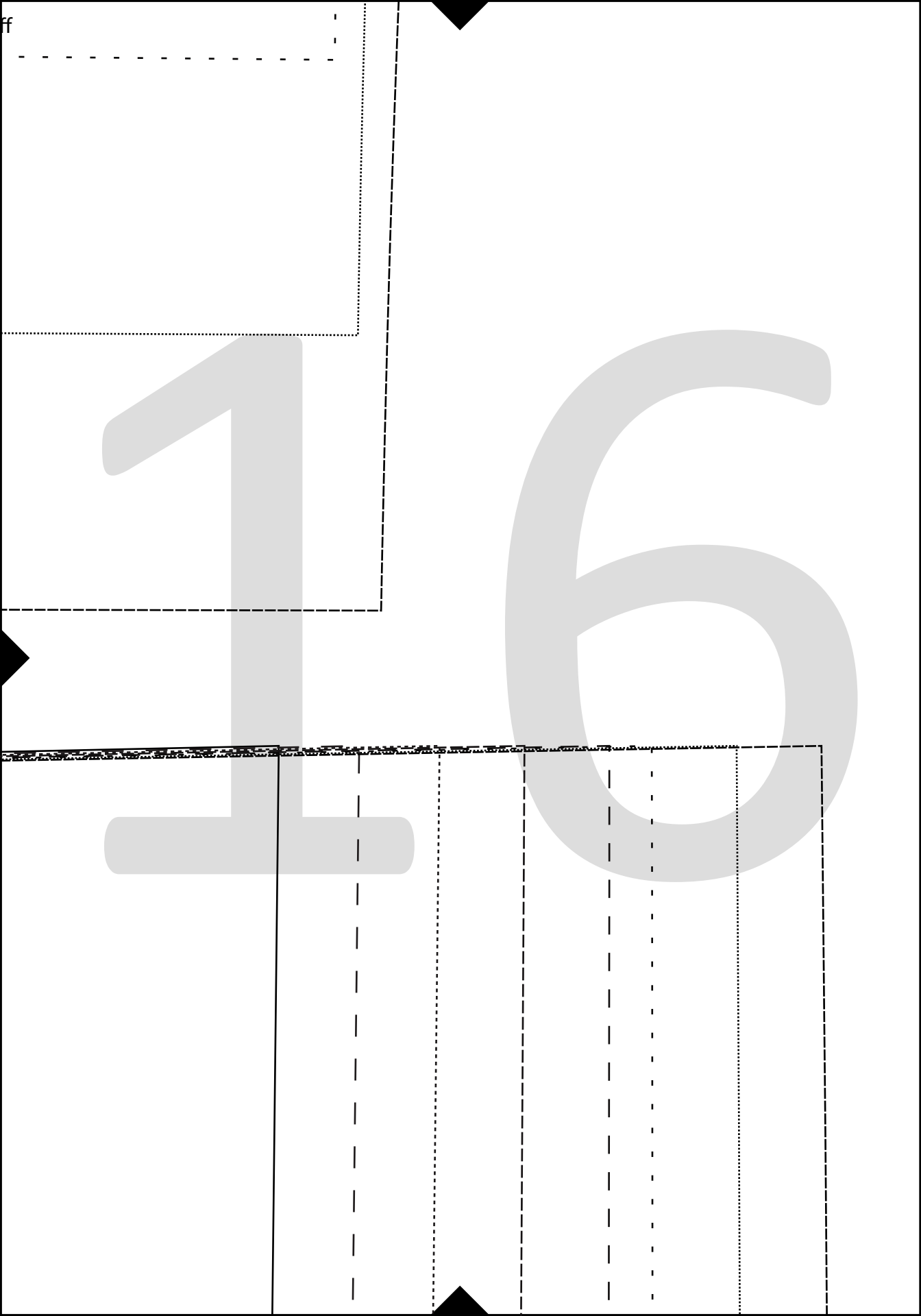


*Fold*

Direction of greatest stretch

1

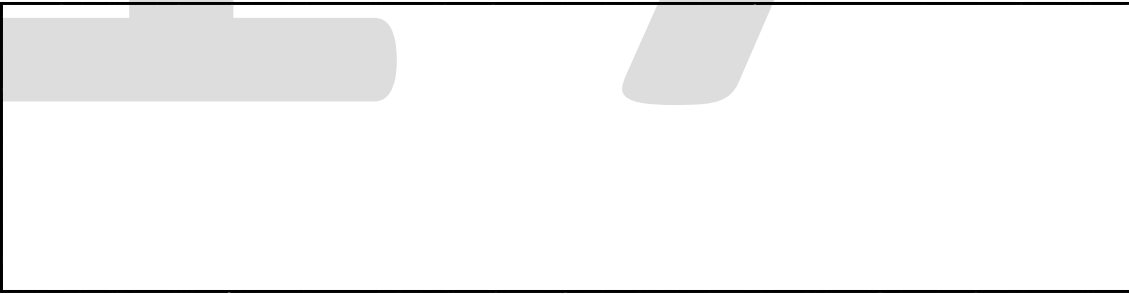
6

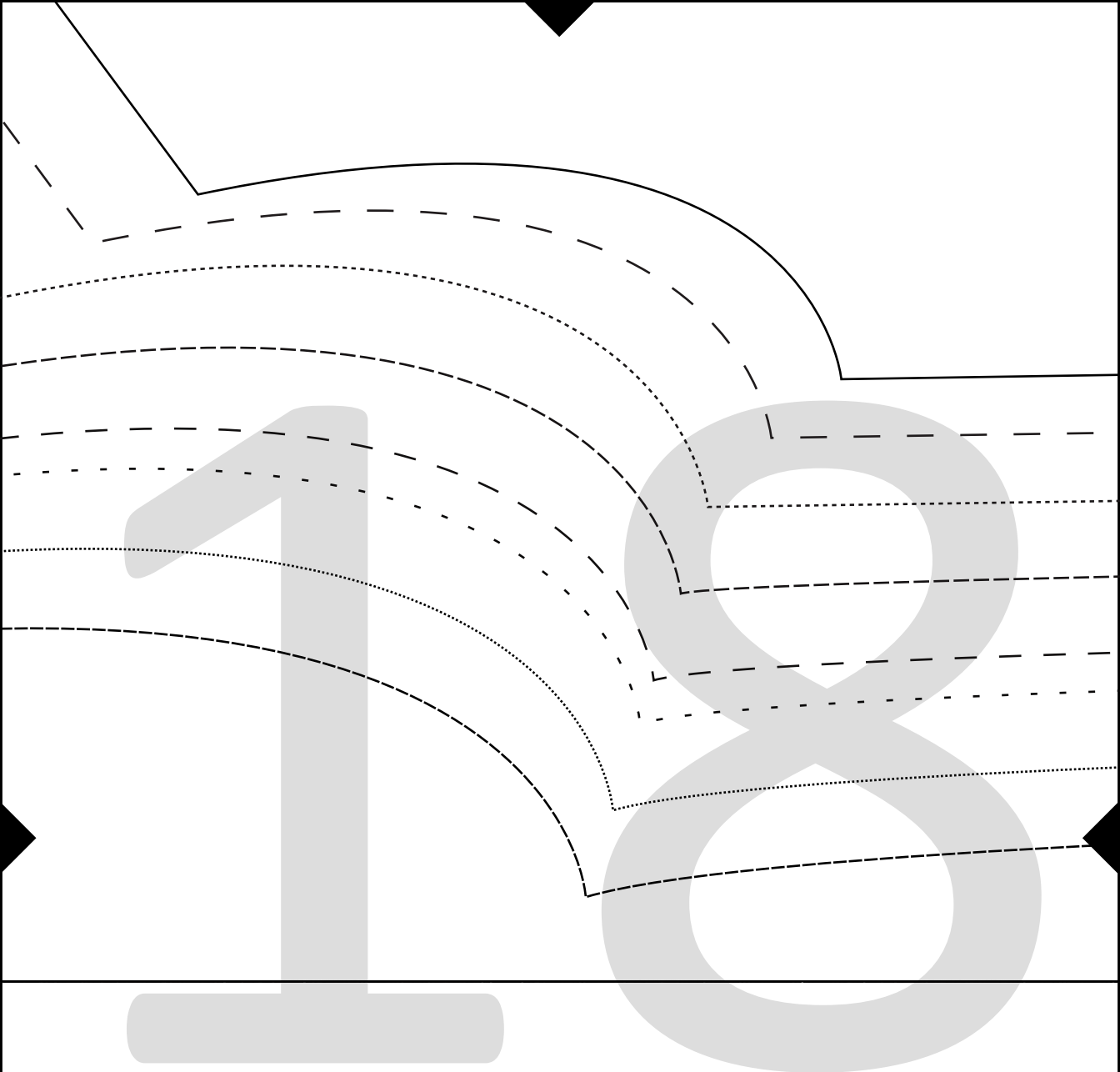




1

7





Direction of greatest stretch



1

9

1	1	1	1	1
1	1	1	1	1
1	1	1	1	1
1	1	1	1	1
1	1	1	1	1

20